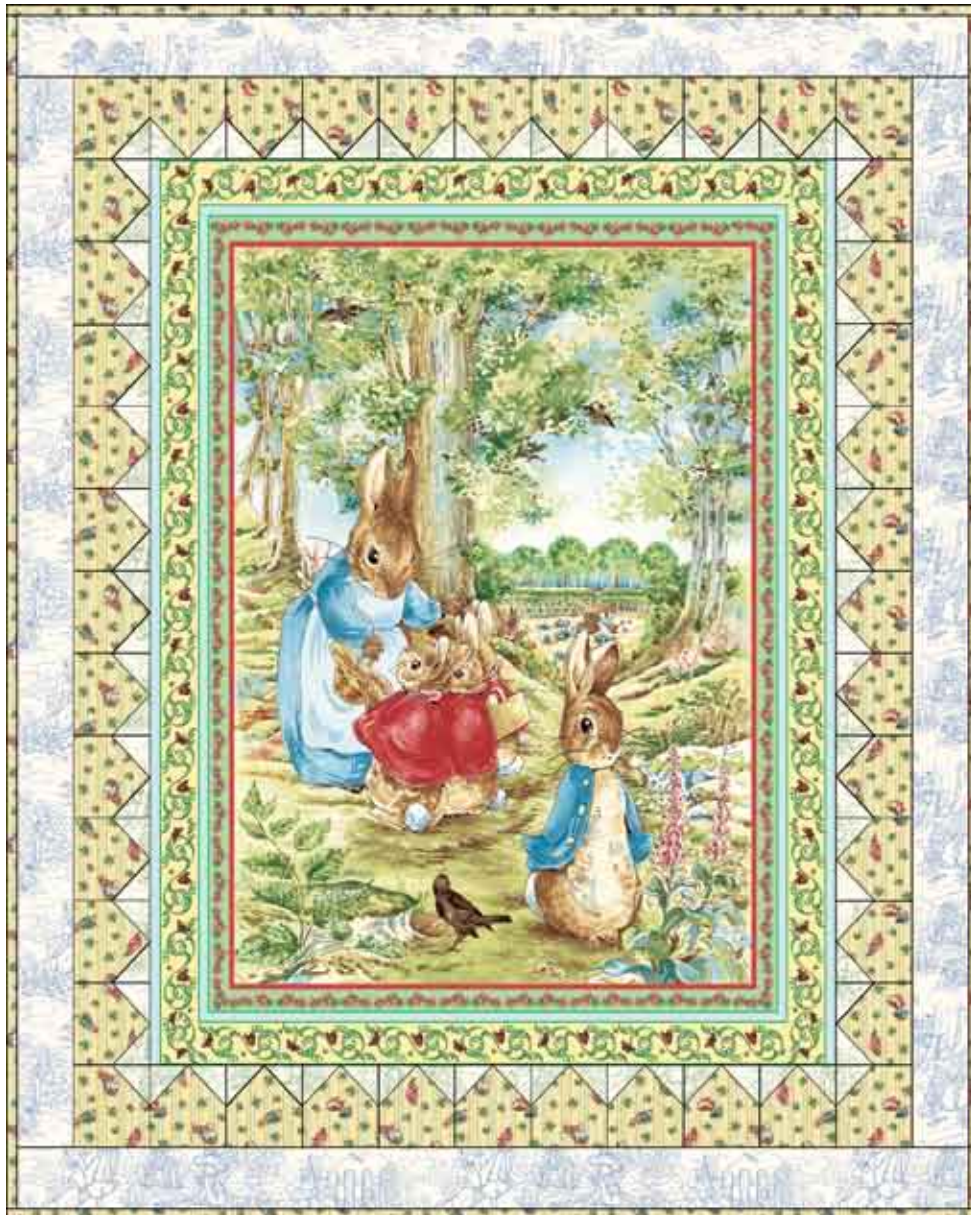


Beatrix Potter™ Peter Rabbit & Friends



Approximate Size: 51" x 59"



20518-B (1 Panel)



25554-G ½ yard



25550-Z 1¼ yard



25554-B ¾ yard



25549-Z 3 ½ yards
(for backing)

Peter Rabbit & Friends

Approximate Size: 51" x 59"

Materials needed:

- #20518-B 1 panel for center of quilt
- #25554-G ½ yard green toile for first border triangles
- #25550-Z 1 ¼ yard stripe for first border squares (you will need more fabric if you choose to cut borders lengthwise—2 yards), and for binding.
- #25554-B ¾ yard blue toile for second border
- #25549-Z 3 ⅓ yards for backing fabric

Cutting:

- #20518-B Cut one panel 36 ½" x 44 ½"
- #25550-Z Cut 44 - 4 ½" squares
Cut 6 strips 2 ½" wide x width of fabric for binding.
- #25554-G Cut 84- 2 ½" squares
- #25554-B Cut 6 strips 3 ¾" x width of fabric

Sewing:

Border #1:

Place one green toile square on corner of a 4 ½" stripe square, right sides together. Draw a line from corner to corner, stitch on the line. Trim outside triangle to a ¼" seam, and press towards the green toile. Repeat this process on the same block, on a corner adjacent to the corner just sewn. You will make 40 blocks in this manner. On the remaining 4 blocks, follow this process on one corner only. These will be the 4 corner blocks in the first border. See photo.

Sew 11 blocks together in a row, green toile corners all on the same side (see photo). Stitch this row to the left side of center panel, with the green toile corners closest to the center panel. Repeat this process for the right side of the center panel.

Sew 2 more sets of 11 blocks in a row, same as above, making sure that the corner blocks are sewn to each end of each row, following picture. Sew to the top and bottom of the quilt, again making sure the green toile corners are closest to the center panel.

Border #2:

Piece strips together at short ends, and sub cut 2 strips 3 ¾" x 52 ½". Sew to the left and right sides of the quilt. Next, cut 2 strips 3 ¾" x 44 ½", sew to the top and bottom of the quilt.

Layer the top, quilt as desired.

Bind quilt using the stripe 2 ½" strips, sewn end to end. Folded in half wrong sides together lengthwise, and press. Sew to quilt, mitering corners and finishing on back side of quilt with slip stitches by hand.



Make 4 corner blocks



Make 40 border blocks

While all possible care has been taken to ensure the accuracy of this pattern, we are not responsible for printing errors or the way in which an individual work varies.