

Rowdy Kids



Quilt Size 66" x 78"



20617-G
2 1/4 Yards



20618-A
5 Yards for Back



20620-A
7/8 Yard



20620-E
1 5/8 Yard



20622-B
2/3 Yard



20622-R
1 5/8 Yard



20623-B
3/8 Yard



20655-T
1 Panel (2 Images)

Rowdy Kids

Size: 66" x 78"

Quilt Designed by Susan Guzman

Skill Level: Beginner

Quilt

Block Size: 10" x 10"

Be sure to read through the instructions completely before attempting this pattern.

Pattern uses 1/4" sewn seams for accuracy, unless stated otherwise.

CUTTING:

WOF = Width of Fabric (Typically 42")

FG = Flying Geese

#20617 G (Kids In Car/Green) – Fussy-cut 2 strips (along selvage of fabric), 56 1/2" x 5 1/2"

Fussy-cut 2 strips (along selvage of fabric), 78 1/2" x 5 1/2"

#20620 A (Brown Bricks) – Cut 3 strips, 1 1/2" x WOF. Piece together, then cut sewn strip to 2 – 1 1/2" x 62 1/2" strips.

Cut 3 strips, 1 1/2" x WOF. Piece together, then cut sewn strip to 2 – 1 1/2" x 52 1/2" strips.

1/2 Yard for Binding: Cut 8 strips, 2" x WOF. Piece together, end-to-end.

#20620 E (Cream Bricks) – Cut 4 strips, 3" x WOF. Then cut 48 – 3" squares.

Cut 4 strips, 5 1/2" x WOF. Then cut 48 – 3" x 5 1/2" rectangles.

Cut 2 strips, 3 1/2" x WOF. Then cut 4 – 17 1/8" x 3 1/2" strips.

Cut 4 strips, 3 1/8" x WOF. Then cut 4 – 22 1/2" x 3 1/8" strips.

#20622 B (Blue Plaid) – Cut 2 strips, 2 1/2" x WOF. Then cut 28 – 2 1/2" squares.

Cut 4 strips, 2 1/2" x WOF. Piece together, then cut sewn strip to 2 – 68 1/2" strips.

Cut 3 strips, 2 1/2" x WOF. Piece together, then cut sewn strip to 2 – 52 1/2" strips.

#20622 R (Red Plaid) – Cut 7 strips, 3" x WOF. Then cut 96 – 3" squares. With a pencil or fabric marking pen, draw a diagonal line on the wrong side of the fabric.

Cut 3 strips, 10 1/2" x WOF. Then cut 41 – 2 1/2" x 10 1/2" strips for sashing.

#20623 B (Kids Heads/Blue) – Cut 2 strips, 5 1/2" x WOF. Then cut 12 – 5 1/2" squares.

#20655 T (Panel) – Fussy-cut two panel images, 16 1/2" x 17 1/8" (Note: Panel images are not square)

#20618 A (Kids Collage) – Cut yardage in half and piece together along selvage for backing

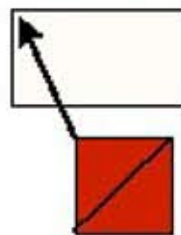
SEWING:

1. Construct Variable Star Block:

Gather the fabric needed to make the Flying Geese (FG) portion of the block: Fabric #20622 R, 96 – 3" squares - with pencil draw a line on the diagonal on the wrong side of the fabric, and Fabric #20620 E, 48 – 5 1/2" x 3" rectangles. Please refer to *Diagram 1, Steps 1-4*, for pictures and instructions on making your FG. Make a total of 48.

Diagram 1 How to make a Flying Geese block

Step 1:



Place one Fabric #20622 R square on the left side of the Fabric #20620 E rectangle; right sides of fabric together.

Step 2:



Sew along solid line, then cut 1/4" seam allowance along dotted line and discard scraps.

Step 3:



Flip up triangle along sew line and press seam; repeat these same steps on the right side to finish your Flying Geese block.

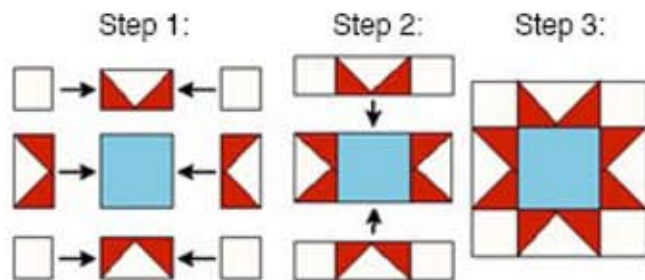
Step 4:



Finished Flying Geese Block

Refer to *Diagram 2, Step 1*: Construct the top row of your block by taking a FG rectangle and place one Fabric #20620 E - 3" square, with right sides together, on either end of the FG rectangle. Pin and sew a seam along the 3" side of each square. Press seams and repeat this process exactly for your third row of the block. Construct the middle row of your block by taking an FG rectangle and pin it to center Fabric #20623 B (bottom of "V" should be along seam edge). Pin and sew seam. Press seam & repeat on the opposite side of the 5 1/2" center square. Referring to *Diagram 2, Step 2*: Piece the 3 rows of your Variable Star block together. Press seams and repeat these instructions for a total of 12 blocks (see finished block shown in *Diagram 2, Step 3*).

Diagram 2: Sew Variable Star Block pieces together



2. Construct 2 Panel Blocks:

Very Important: Use a scant 1/4" seam allowance to construct these blocks, only.

For each panel, add vertical sashing with Fabric #20620 E: Pin then sew your 17 1/8" x 3 1/2" strips to each vertical side of each panel. Next, pin then sew your 22 1/2" x 3 1/8" strips to each horizontal (top/bottom) of each panel. Square up your sashed panels to measure 22 1/2" square.

3. Construct Horizontal and Vertical Sashing:

Please refer to *Diagram 3, Steps 1 & 2* to construct your sashing strips.

Horizontal sashing – Pin then sew 1 Fabric #20622 R, 2 1/2" x 10 1/2" strip to each side of a Fabric #20622B square. Make 10 of these strips. Vertical sashing (use 6 Fabric #20622 B 2 1/2" squares and 5 #20622 R 2 1/2" x 10 1/2" rectangles

for each vertical sashing strip) - Pin then sew 1 Fabric #20622 B 2 1/2" square to 1 Fabric #20622 R 2 1/2" x 10 1/2" rectangle. Iron seam, then continue adding to the strip in this order, ending with a Fabric #20622 B square. Make 3 of these strips.

Diagram 3: Sewing Horizontal & Vertical Sashing

Step 1: Horizontal Sashing



Step 2: Vertical Sashing (shown horizontally; sew each piece together into one long strip, as shown)

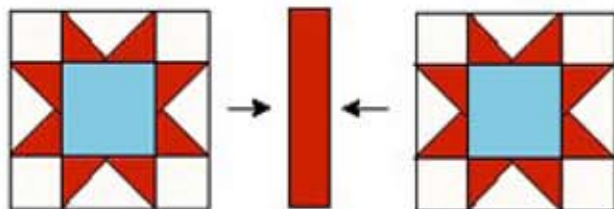


4. Sew Variable Star blocks to Sashing:

Please refer to *Diagram 4* to add sashing to Variable Star block.

Take 2 Variable Star blocks and sew to either side of a Fabric #20622 R, 2 1/2" x 10 1/2" sashing strip. Make 6 of these.

Diagram 4: Sew Variable Star Blocks to Sashing



5. Assemble Center of Quilt:

Please refer to *Diagram 5*, sew together two vertical rows of your quilt center, then add 3 rows of vertical sashing to finish it off:

Diagram 5: Sew Rows Together & Add Vertical Sashing



Border 1: Fabric #20620 A – Take two pieces measuring $1\frac{1}{2}'' \times 62\frac{1}{2}''$, pin and sew each to the vertical left and right sides of the quilt center. Next, take two pieces measuring $1\frac{1}{2}'' \times 52\frac{1}{2}''$ and sew to each horizontal side of the quilt center. Press seams with iron.

Border 2: Fabric #20622 B – Take two pieces measuring $2\frac{1}{2}'' \times 52\frac{1}{2}''$, pin and sew to each horizontal side of the quilt center (different from last border). Next, take two pieces measuring $2\frac{1}{2}'' \times 68\frac{1}{2}''$, pin and sew each to the vertical left and right sides of the quilt center. Press seams with iron.

Border 3: Fabric #20617 G – Take two pieces measuring $56\frac{1}{2}'' \times 5\frac{1}{2}''$, pin and sew to each horizontal side of the quilt center. Next, take two pieces measuring $5\frac{1}{2}'' \times 78\frac{1}{2}''$, pin and sew each to the vertical left and right sides of the quilt center. Press seams with iron.

Sandwich quilt top with batting and Fabric #20618 A backing. Quilt the top, adding Fabric #20620 A as your pieced binding.

6. Construct Borders:

While all possible care has been taken to ensure the accuracy of this pattern, we are not responsible for printing errors or the way in which individual work varies.