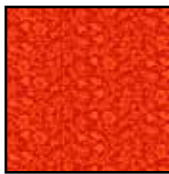




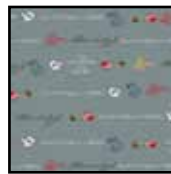
Finished Quilt Size: 72" x 72"



22032 M



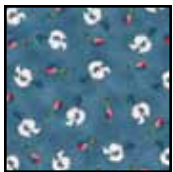
22040 O



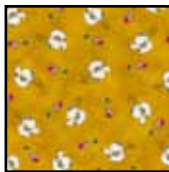
22039 K



22035 Z



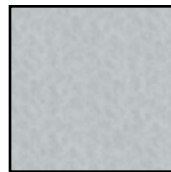
22037 B



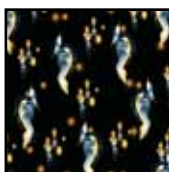
22037 S



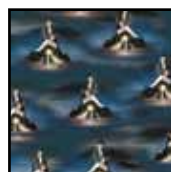
22040 J



21272 KZ



22033 J



22034 N

Quilt				
KIT REQUIREMENTS				
Design	Yards	12 Kits	18 Kits	24 Kits
		Bolts	Bolts	Bolts
22032 M	1 PANEL	1	1	2
22040 O	$\frac{3}{8}$	1	1	1
22039 K	$\frac{1}{2}$	1	1	1
22035 Z	$\frac{1}{2}$	1	1	1
22037 B	$\frac{7}{8}$	1	2	2
22037 S	$\frac{1}{2}$	1	1	1
22040 J (inc binding)	$1\frac{1}{3}$	2	3	4
21272 KZ (Quilting Essentials)	$1\frac{1}{4}$	2	2	3
22033 J	$1\frac{1}{2}$	2	3	3
22034 N (backing)	$4\frac{5}{8}$	6	9	12

## Music of the Night

Designed by Wendy Sheppard

Finished quilt size: 72" x 72"

Skill level: Intermediate, some knowledge of applique helpful.

### Cutting Directions for Quilt:

WOF = width of fabric

Templates include seam allowance.

### 22032 M Phantom of the Opera panel

Fussy cut (1) 18 1/2" square, centering the panel motif in the square, reserve remainder for wall hangings or another project

### 21272 KZ Gray solid

Cut (6) 6 1/2" x WOF strips; recut into (36) 6 1/2" squares

### 22037 S Gold mask print

Cut (2) 6 1/2" x WOF strips for fan blades

### 22039 K Gray word print

Cut (1) 6 1/2" x WOF strip for fan blades

Cut (1) 6 1/2" x WOF strip; recut into (4) 6 1/2" squares

### 22040 J Black/gray print

Cut (3) 6 1/2" x WOF strips for fan blades

Cut (6) 2 1/2" x WOF strips for first border

Cut (8) 2 1/4" x WOF strips for binding

### 22035 Z Cream poster print

Cut (2) 6 1/2" x WOF strips; recut into

(4) 6 1/2" x 18 1/2" rectangles

### 22037 B Blue mask print

Cut (4) 6 1/2" x WOF strips; recut into

(4) 6 1/2" x 30 1/2" strips

### 22040 O Red/orange print

Cut (6) 1 1/2" x WOF strips for second border

### 22033 J Black phantom print

Cut (7) 6 1/2" x WOF strips for outer border

### 22034 N Navy scenic print

Cut (2) 80" lengths for backing

### Fan Units:

1. Prepare a template for the Dresden Fan pattern.
2. Place the template on the wrong side of a gold 6 1/2" strip. Mark around the template. Rotate the template on the strip and mark a second fan blade. Continue to mark 24 blades along the length of the strip. Repeat with the second gold strip to mark a total of 48 gold blades. Cut out each blade.



3. Repeat step 2 with the black/gray 6 1/2" strips to cut 72 black blades and with the gray 6 1/2" strip to cut 24 gray blades.

4. Sew a gold blade to a black blade on a straight edge, ending stitching at the dot. Press seam open. Repeat with all gold blades to make 48 gold/black pairs. Join 2 pairs to complete 1 gold unit. Press seam open. Repeat to make 24 gold units.



Make 24

Make 12

5. Repeat step 4 with the gray blades and the remaining black blades to make 12 gray units.
6. Turn the round edge of each blade under 1/4". Press.
7. Place a gold blade unit on a gray solid square, aligning the straight outer edges of the blade unit with the edges of the square and the corner of the blade unit with 1 corner of the square. Pin in place. Hand or machine appliqué the round edges of the blades in place on the gray square. Baste the 2 straight edges of the blade unit to the edges of the square to complete 1 gold fan unit.
8. Repeat step 7 to make 24 gold fan units total and 12 gray fan units.



Make 24



Make 12

## Quilt Center:

1. Sew a 6 ½" gray word print square between 2 gold fan units to make a side row. Press seams toward the square. Repeat to make a second side row. Repeat with 4 fan units and a gray word print square to make the top row. Press seams toward the square. Repeat to make the bottom row.



Side - Make 2



Top / Bottom - Make 2

2. Sew the side rows to the sides of the 18 ½" panel square referring to the quilt photo for positioning of the rows. Press seams toward the rows. Sew the top and bottom rows to the top and bottom of the panel square. Press seams toward the rows.

3. Repeat step 1 with gray fan units and the 6 ½" x 18 ½" cream poster print rectangles to make 2 side rows and top and bottom rows. Press seams toward the rectangles.



Side - Make 2



Top / Bottom - Make 2

4. Sew the side rows to the sides of the pieced center and the top and bottom rows to the top and bottom. Press seams toward the rows.

5. Repeat step 1 with the remaining gold fan units and the 6 ½" x 30 ½" blue mask print strips to make 2 side rows and top and bottom rows. Press seams toward the strips.



Side - Make 2



Top / Bottom - Make 2

6. Sew the side rows to the sides of the pieced center and the top and bottom rows to the top and bottom to complete the 54 ½" x 54 ½" quilt center. Press seams toward the rows.

## Quilt Assembly:

1. Join the 2 ½" x WOF black/gray print strips on the short ends to make a long strip. Press seams to 1 side. Cut into (2) 54 ½" and (2) 58 ½" strips. Sew the 54 ½" strips to the sides of the quilt center and the 58 ½" strips to the top and bottom. Press seams toward the strips.

2. Join the 1 ½" x WOF red/orange print strips on the short ends to make a long strip. Press seams to 1 side. Cut into (2) 58 ½" and (2) 60 ½" strips. Sew the 58 ½" strips to the sides of the quilt center and the 60 ½" strips to the top and bottom. Press seams toward the strips.

3. Join the 6 ½" x WOF black phantom print strips on the short ends to make a long strip. Press seams to 1 side. Cut into (2) 60 ½" and (2) 72 ½" strips. Sew the 60 ½" strips to the sides of the quilt center and the 72 ½" strips to the top and bottom to complete the quilt top. Press seams toward the strips.

4. Remove the selvage edges from the backing pieces. Join the pieces on the long edges with a ½" seam allowance. Press seam open. Trim the side edges to make an 80" x 80" backing piece.

5. Layer and quilt using your favorite methods.

6. Trim the batting and backing even with the top.

7. Place a large plate or bowl or a large circle template on 1 outer corner of the quilt. Mark the outside edge of the circular shape to make a round corner. Trim the corner on the marked line. Repeat on each corner of the quilt.

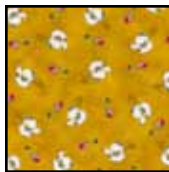
8. Bind the edges to complete the quilt using the black/gray print binding strips.



Finished Wall Hangings Size: 14" x 33"



22032 M



22037 S



22040 J



21272 KZ



22039 J



22040 O



22034 N

**Optional:** 2¾ yards of wide satin ribbon for hangers

Wall Hangings	
FABRIC REQUIREMENTS	
Design	Yards
22032 M	1 PANEL or remainder from quilt
22037 S	⅓
22040 J	⅓
21272 KZ (Quilting Essentials)	½
22039 J	⅝
22040 O (binding)	¾
22034 N (backing)	1¼

## Music of the Night

Designed by Wendy Sheppard

Finished wall hanging size: 14" x 33" (excluding ribbon)

Skill level: Intermediate, some knowledge of applique helpful

### Cutting for Wall Hangings:

#### Phantom of the Opera panel (left over from quilt)

Cut (2) 8 1/2" x 17 1/2" rectangles, centering a side motif in each rectangle

#### 21272 KZ Gray solid

Cut (2) 6 1/2" x 42" strips; recut into (8) 6 1/2" squares

#### 22037 S Gold mask print

Cut (1) 6 1/2" x 42" strip for fan blades

#### 22040 J Black/gray print

Cut (1) 6 1/2" x 42" strip for fan blades

#### 22039 J Black word print

Cut (4) 2 1/2" x 17 1/2" strips along the length of the fabric

Cut (4) 1 1/2" x 12 1/2" strips across the remaining width of the fabric

#### 22040 O Red/orange print

Cut (6) 1 1/2" x 42" strips; recut into (4) 1 1/2" x 31 1/2" strips and (4) 1 1/2" x 14 1/2" strips

Cut (5) 2 1/4" x 42" strips for binding

#### 22034 N Navy scenic print

Cut (2) 20" x 37" backing pieces

### Wall Hanging Assembly:

1. Referring to the fan unit instructions for the quilt, cut 16 gold fan blades and 16 black fan blades. Complete 8 gold fan units.

2. Sew a 2 1/2" x 17 1/2" black word print strip to the long sides of the panel rectangles and a 1 1/2" x 12 1/2" strip to the top and bottom. Press seams toward the strips.

3. Join 2 gold fan units to make a row referring to the wall hanging photo for positioning of the units. Press seam open. Repeat to make 4 rows total.

4. Sew a row to the top and bottom of the bordered panel rectangles. Press seams toward the panel rectangles.

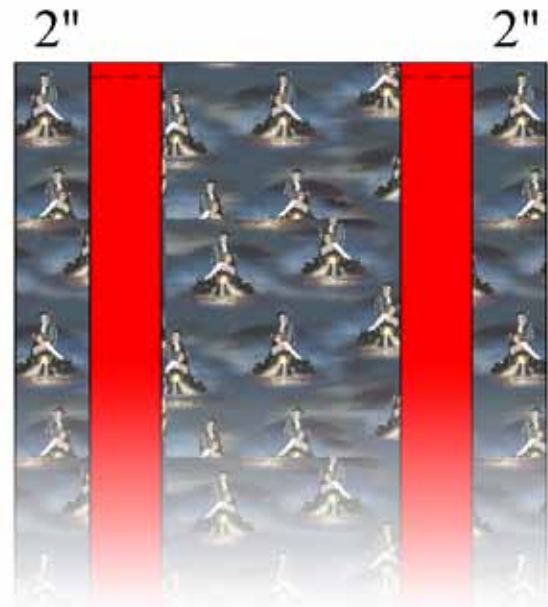
5. Sew a 1 1/2" x 31 1/2" red/orange print strip to the long sides of the pieced unit and a 1 1/2" x 14 1/2" strip to the top and bottom to complete the tops. Press seams toward the strips.

[www.QuiltingTreasures.com](http://www.QuiltingTreasures.com)

6. Layer and quilt using your favorite methods.

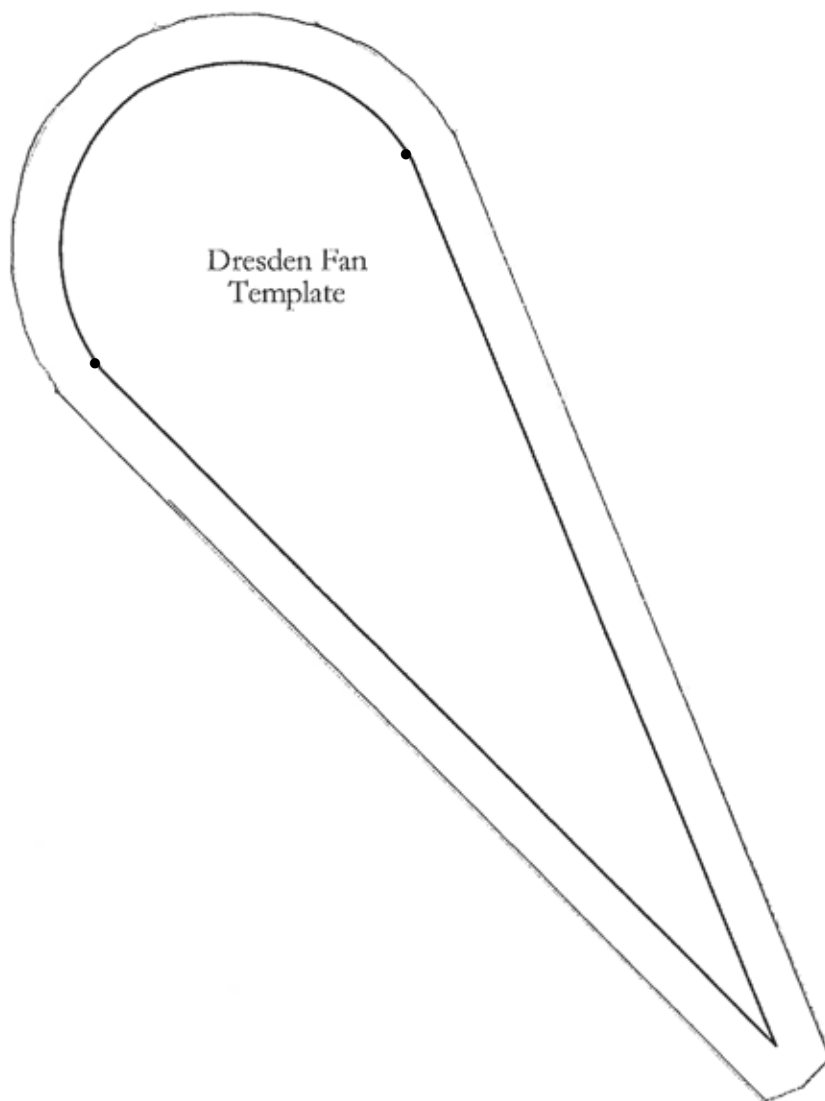
7. Trim the batting and backing even with the top.

8. **Optional Ribbon Hanger:** Cut the 2" wide ribbon into (4) 24" lengths. Pin 1 end of a ribbon length 2" from 1 top corner on the back side of the wall hangings. Repeat with a second ribbon length 2" from the remaining top corner. Baste in place.



9. Bind the edges of the wall hangings, using the red/orange binding strips and enclosing the basted ends of the ribbons in the binding.

10. Tie the loose ends of the ribbons in a bow to use for hanging.



*While all possible care has been taken to ensure the accuracy of this pattern, we are not responsible for printing errors or the way in which individual work varies.*