

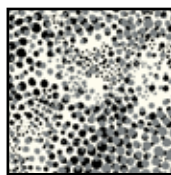
# Ebony and Ivory



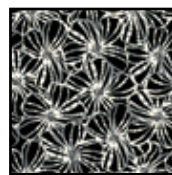
Finished Size: 76" x 90"



21272 J



21775 Z



21776 J



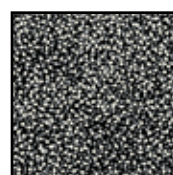
21777 JK



21779 J



21779 Z



21780 J

### YARDAGE REQUIREMENTS

Design	Yards
21775 Z	¾
21780 J	¾
21777 JK	¾
21779 Z	2 ½
21779 J	1½
21272 J (inc binding)	1½
21776 J (backing)	6

## Ebony and Ivory

Finished Size: 76" x 90"

Skill Level: Advanced

**Note:** Unless noted, measurements are given in inches and seam allowance is ¼". Strips are cut selvedge to selvedge. Border strip measurements will be rounded up to allow for individual sewing differences and will be trimmed to size once sewn to quilt top. WST = wrong sides together

### Cutting and Fabric Preparation:

1. **21779Z White Floral** – Fabric A
  - a. Cut (8) 10" strips. Subcut into (32) 10" squares.
2. **21775Z White Abstract Dot** – Fabric B
  - a. Cut (8) 2 ½" strips. Subcut into (32) 2 ½" x 10" strips.
3. **21780J Black Small Dot** – Fabric C
  - a. Cut (8) 2 ½" strips. Subcut into (32) 2 ½" x 10" strips.
4. **21777JK Black Wavy Stripe** – Fabric D
  - a. Cut (8) 2 ½" strips. Subcut into (32) 2 ½" x 10" strips.
5. **21272J Black Blender**
  - a. Cut (8) 2 ½" strips.
  - b. Cut (1) 30" square.
6. **21779J Black Floral**
  - a. Cut (9) 5 ½" strips.

### Block Assembly:

7. Sew (1) Fabric D 2 ½" x 10" strip to (1) Fabric B 2 ½" x 10" strip. Your D/B strip set should be 4 ½" x 10". Repeat with the remaining 31 strips of each print.
8. Sew (1) Fabric C 2 ½" x 10" strip to the D/B strip set created above. Your D/B/C strip set should be 6 ½" x 10". Repeat with the remaining 31 strips of Fabric C.
9. Sew (1) Fabric A 10" square to the strip set created in Step 8, stitching to the C strip. Your D/B/C/A block should be 10" x 16". Repeat with the remaining 31 Fabric A 10" squares.

### Quilt Top Assembly:

10. Sew (4) of the blocks created in Step 9 together to create Row 1 (Diagram 1).



Diagram 1

11. Repeat with the remaining blocks, creating a total of (8) rows of (4) blocks each.
12. Rows 1, 3, 5, and 7 will begin with the Fabric A 10" block.
13. Rows 2, 4, 6 and 8 will begin with the Fabric D strips.
14. Following Diagram 1, sew strips together as indicated in Steps 12 & 13.
15. Sew the (8) Black Blender 2 ½" strips together end to end, at a 45-degree angle, to create your inner border strips. Cut (2) strips 2 ½" x 68" and (2) strips 2 ½" x 78".
16. Sew the (2) 2 ½" x 68" Black Blender strips to the top and bottom of the quilt top, pressing away from the quilt center.
17. Trim excess, squaring corners.
18. Sew the (2) 2 ½" x 78" Black Blender strips to the left and right of the quilt top, pressing away from the quilt center.
19. Trim excess, squaring corners.

**20.** Sew the (9) Black Floral 5 ½” strips together end to end, at a 45-degree angle, to create your outer border strips. Cut (2) strips 5 ½” x 79” and (2) strips 5 ½” x 93”.

**21.** Sew the (2) Black Floral 5 ½” x 79” strips to the top and bottom of the quilt, stopping ¼” from each corner. Backstitch to secure.

**22.** Sew the (2) Black Floral 5 ½” x 93” strips to the left and right sides of the quilt, stopping ¼” from each corner. Backstitch to secure.

**23.** Miter all four corners, press seams open. Trim any excess.

**24.** Use the Fabric A 30” square to create a continuous bias binding square, and cut 2 ¼” bias binding strips. This square will create 400” of continuous bias binding. Press in half lengthwise, WST. (Please note that bias binding strips are required to bind a curved edge.)

## Finish the Quilt:

**25.** Cut the backing fabric **21776 J Black Outline Flowers** into (2) 3 yard long pieces.

**26.** Using a ¼” – ½” seam allowance, sew the two pieces of backing fabric together, along the long side. Press the seam open.

**27.** Center and lay the batting on top of the wrong side of the backing fabric

**28.** Center and lay the pieced quilt top on top of the batting.

**29.** Pin or baste the quilt sandwich using your preferred method for securing the layers.

**30.** Quilt as desired.

**31.** Trim the edges of your quilt.

**32.** Once the quilt is quilted, create your curved template by tracing the full curve shown (12 full curves along the top and bottom, 14 full curves along the left and right side) onto a long piece of paper (you may need to tape several small pieces together if you cannot obtain long/banner paper). You may need to make adjustments to curves at the center and/or at the corners of the quilt based

on individual sewing differences. (Please note – it is important the quilt is quilted prior to the curves being cut to prevent stretching of the exposed bias edges.)

**33.** Trace the corner template at each corner of your template strip set. Depending upon personal preference, you may choose to make your adjustments at the corner to widen or reduce your corner curves.

**34.** Once you are satisfied with your curve placement, cut along the drawn edge of your paper template and pin to the edge of your quilt, matching up the trimmed edge with the top of each curve.

**35.** Mark the curves with pencil or chalk.

**36.** Trim

**37.** Use the Black Blender continuous bias binding strips to bind the quilt.

