



Finished Quilt: 60 1/2" x 60 1/2"



21848 S
Animal Panel



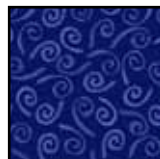
21850 E
Cream Tonal



21850 Q
Green Tonal
inc binding



21850 O
Gold Tonal



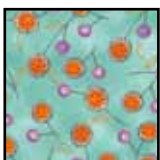
21854 V
Blue Tonal



21854 R
Red Tonal



21852 S
Gold/Black Dots
(backing)



21851 Q
Blue Print



21853 QS
Stripe



21849 W
Blue Animals

FABRIC REQUIREMENTS	
Design	YARDS
21848S	1 PANEL (3 Images)
21850E	1 1/2
21850Q	1 1/8
21850O	1/2
21854V	1/2
21854R	1/4
21851Q	1/2
21853QS	1/2
21849W	1
21852S (backing)	3 2/3

Finished Block Size: 15"
Skill Level: Confident Beginner
Quilt Designed by Janice Averill

NOTE: Unless noted, measurements are given in inches and seam allowance is 1/4". Strips are cut selvedge to selvedge. RST = right sides together WST = wrong sides together WOF = width of fabric

CUTTING AND FABRIC PREPARATION:

- 1. Animal Panel 21848 S:** a. Cut (3) images 12" wide x 10 3/4" tall from the panel. There should not be any of the black outline showing, cut the panel smaller if it is. The Cream Tonal border strips are cut wide to compensate for this situation.
- 2. Cream Tonal 21850 E:** a. Cut (3) 3 1/2" strips. Subcut (6) 3 1/2" x 16" rectangles. b. Cut (2) 2 3/4" strips. Subcut (6) 2 3/4" x 11 1/2" rectangles. c. Cut (11) 3" strips. Subcut (48) 3" x 5 1/2" rectangles from (7) of the 3" strips. Set the remaining (4) strips aside for the four patch units.
- 3. Green Tonal 21850 Q:** a. Cut (4) 3" strips. Subcut (48) 3" squares. b. Cut (7) 2 1/2" strips (binding).
- 4. Gold Tonal 21850 O:** a. Cut (2) 3" strips. b. Cut (6) 1 1/2" strips.
- 5. Blue Tonal 21854 V:** a. Cut (6) 1 1/2" strips.
- 6. Red Tonal 21854 R:** a. Cut (1) 4" strip. Subcut (8) 4" squares.
- 7. Blue Flower Print 21851 Q:** a. Cut (2) 3" strips. b. Cut (1) 5 1/2" strip. Subcut (6) 5 1/2" squares.
- 8. Stripe 21853 QS:** a. Cut (6) 2 1/2" strips.
- 9. Blue Animals 21849 W:** a. Cut (1) 25 1/4" strip. Subcut (8) 25 1/4" x 4" rectangles.

BLOCK ASSEMBLY:

- Draw a diagonal line, on the (48) 21850 Q Green tonal 3" squares. Place one 3" square, right sides together (RST), on the right corner of a 21850 E Cream tonal 3" x 5 1/2" rectangle (Diagram A). Sew on the marked line. Trim the outer corner, leaving a 1/4" seam. Fold over and press toward corner. Repeat on the right corner as shown below. Repeat with the remaining marked 3" squares and (23) of the 3" x 5 1/2" rectangles to create a total of (24) flying geese units.
- Sew the long side of each of these flying geese units to



Diagram A



Unit A
Diagram B

a 21850 E Cream tonal 3" x 5 1/2" rectangle. Press the seam towards the Cream rectangle. The Flying Geese unit should point towards the Cream rectangle (Diagram B). The finished piece will be called

2 Unit A. Repeat with the remaining flying geese units and 3" x 5 1/2" rectangles; make 24 total units.

3. Sew a 3" 21850 E Cream tonal strip to a 21851 Q Blue flower Print 3" strip together on the long side (Diagram C). Press the seam towards the darker fabric. Make two strip sets.

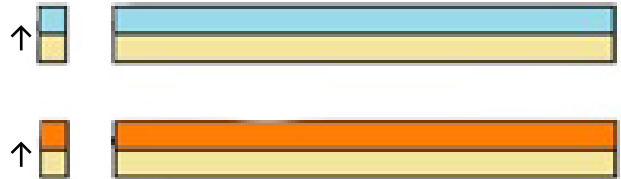
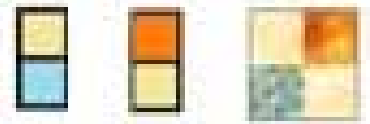


Diagram C

4. Trim one edge of the strip set to remove selvedges and straighten the edge. Cut (24) 3" wide units along the length of each strip. Tip: Use the long seam as a reference for ensuring that the pieces are square, when cutting the 3" wide pieces. After cutting 3 or 4 units, trim the short edge of the strip again. This will ensure that the cut edge is perpendicular to the seam.

5. Repeat Steps 13 and 14 using the 21850 E Cream tonal and 21850 O Gold Tonal 3" strips.

6. Sew the units together, in pairs (Diagram D) to create (24) Unit B units. Make sure the units are rotated correctly. Tip: Use the seam ridges butting up against each other to help you keep the seams aligned.



Unit B Diagram D

7. Make a row using 2 blocks of Unit B and 1 block of Unit A (Diagram E). Make sure all the units are rotated correctly. Sew the blocks together and press the seams towards the four patch (Unit B) units. Make 12 block rows.

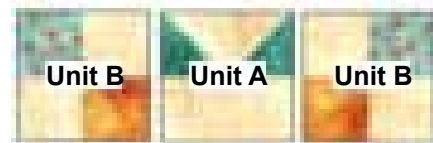


Diagram E

8. Make a row using (2) blocks of Unit A and (1) 5 1/2" square of the 21851 Q blue flower print. Make sure the Unit A blocks are rotated correctly (Diagram F). Sew the blocks together and press the seams towards the 5 1/2" 21851 Q blue flower print square. Make 6 rows.



Diagram F

9. Sort out the 3-unit rows into piles (Diagram G). There should have six 3-unit rows in each pile. Make sure all

the rows are rotated correctly. Sew the top row to the center row, pressing the seam towards the center row. Add the bottom row to these two; press the seam towards the center row. Make 6 blocks total. Set these aside.

PANEL BLOCKS:

10. Sew the 21850 E Cream Tonal 2 3/4" x 11 1/2" strips to the sides of the animal image blocks fussy cut from the 21848 S panel (Diagram H). Press the seams towards the Animal image block. Trim the ends of the Cream Tonal strips, if needed, even with the top and bottom of the animal image block.

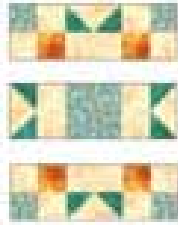


Diagram G

11. Sew the 21850 E Cream Tonal 3 1/2" x 16" strips to the top & bottom of the animal image block. Press the seams towards the animal image block. Square the block to the unfinished size of 15 1/2" (15" plus seam allowance). Keep the animal image centered.

12. Repeat Steps 10-12 with the remaining (2) fussy cut animal image blocks and cream tonal strips.

QUILT TOP ASSEMBLY:

13. Lay the blocks out as shown in the finished quilt image. Sew three rows of three blocks each (Diagram J). Press the seams for each row in opposite directions as shown by the arrows in Diagram J.

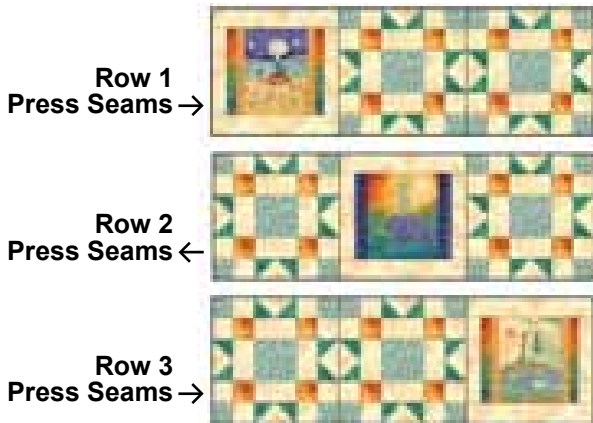


Diagram J

14. Sew the bottom of row 1 to the top of row 2.

15. Sew the top of row 3 to the bottom of row 2.

16. Press the seams away from the center row. Finished measurement 45 1/2" x 45 1/2".

ADDING THE MITERED BORDERS 1, 2 & 3:

17. 21850 O Gold Tonal: Stitch the (6) 1 1/2" strips together end to end, at a 45 degree angle. Cut (4) 1 1/2" x 50" strips. Refer to Diagram K for layout of the three mitered borders.

18. 21853 QS Stripe: Stitch the (6) 2 1/2" strips together end to end, at a 45 degree angle. Cut (4) 2 1/2" x 54" strips. Refer to Diagram K for layout of the three mitered borders.

19. 21854 V Blue Tonal: Stitch the (6) 1 1/2" strips together end to end, at a 45 degree angle. Cut (4) 1 1/2" x 56" strips. Refer to Diagram K for layout of the three mitered borders.

20. On the wrong side of the quilt top, in each corner, measure 1/4" in from each side. Mark this point with pencil or chalk. Do this for the other 3 corners. Also find the center of each side of the quilt top and mark with a pin. Set this aside.

21. Fold all the border strips in half lengthwise to find the center of each strip. Mark the center of the strips with chalk on the wrong side across the width of the strip, edge to edge.

22. Sew one of the 21850 O Gold Tonal 1 1/2" x 50" border strip to a 21853 QS Stripe 2 1/2" x 54" border strip; make sure the center marks are matched.

23. Now sew the 21854 V Blue Tonal 1 1/2" x 56" border strip to the 21853 QS Stripe border strip, make sure the center marks are matched. This is one border strip set. Repeat to make three border strip sets. On two of the border strip sets, press the seams towards the 21854 V Blue tonal border strip and on the other two border strip sets, press the seams towards the 21850 O Gold tonal border strip. This will help you to lock the seams when you finish the mitered border. Set these aside in pairs based on their pressed seam direction.

24. Measure 22 1/2" from the center chalk mark on both sides of the chalk mark along the edge of the 21850 O Gold tonal fabric. Place a mark, 1/4" in from the raw edge of the Gold tonal border strip. Do this for all four mitered border strips.

25. Draw a line through the mark you just made on the 21850 O Gold Tonal that is 45 degrees from the raw edge of the 21854 V Blue tonal border. Make sure that you can still see the 1/4" mark on the line (Diagram K). Trim the extra border fabric past this line leaving a 1/2" seam allowance.



45° Angle

45° Angle

Diagram K

26. Attach one pair of the border strip sets to the sides of the quilt top. Match the pinned center marks and the marks made on both ends of the border strip to the quilt top center. Sew from one 1/4" corner mark to the opposite 1/4" corner mark. **Do not knot or sew in reverse; leave long thread tails.** Press the new seam away from the quilt top center. Now sew the other pair of border strip sets to the top and the bottom of the quilt top following the previous directions.

27. Fold the quilt in half diagonally, right sides together, towards the corner that you are working on. Using a pin, align and interlock the seams at the $\frac{1}{4}$ " corner mark and the border strip seams, and pin in place (Diagram L).

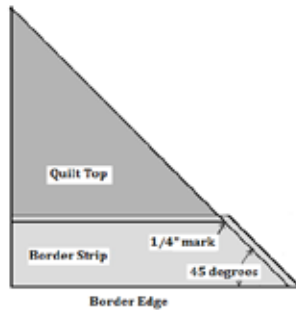


Diagram L

28. Sew on the line you drew, leaving long thread tails, and open quilt to make sure that the intersection lays flat. Tie off all the thread tails in this corner, using a square knot.

29. Cut away excess fabric leaving at least a $\frac{1}{4}$ " seam allowance. Press seam open. Repeat this on 3 remaining corners. Now press the quilt top/border seam flat then press it towards the borders. Finished measurement $53 \frac{1}{2}$ " x $53 \frac{1}{2}$ ".

BORDER 4:

30. Sew the short ends of two 21849 W Blue Animal Print $25 \frac{1}{4}$ " x 4" rectangles to either side of a 21854 R Red Tonal 4" square (Diagram M). Press the seams toward the red tonal square. Make four of the units. Set two aside for the side borders.



Diagram M

31. Sew a 21854R Red Tonal 4" square to both short ends of the other two Blue Animal/Red Tonal units (Diagram N). These will be the top & bottom borders.



Diagram N

32. Sew the Side borders to the sides and the top and bottom borders to the quilt top and bottom (Diagram P). Press the seams towards this border.



Diagram P

FINISH THE QUILT:

33. Cut the 21852 S gold and black dots backing fabric into (2) 66" long pieces.

34. Using a $\frac{1}{4}$ " – $\frac{1}{2}$ " seam allowance, sew the two pieces of backing fabric together, along the long side. Press the seam open.

35. Center and lay the batting on top of the wrong side of the backing fabric

36. Center and lay the pieced quilt top on top of the batting.

37. Pin or baste the quilt sandwich using your preferred method for securing the layers.

38. Quilt as desired.

39. Use the (7) 21850 Q green tonal $2 \frac{1}{2}$ " binding strips to bind the quilt.

While all possible care has been taken to ensure the accuracy of this pattern, we cannot be responsible for errors in printing or the way in which individual work varies.