

mod floral



Approximate finished Size: 53" x 53"

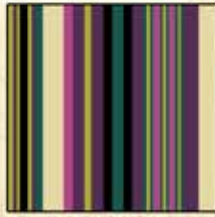
© 2009 Laura Ashley Inc.

mod floral

LAURA ASHLEY.



21221 J ¼ yard



21223 QH ¼ yard



21224 EV ¼ yard



21225 H ¼ yard



21225 P ¼ yard



21224 P ⅙ yard



21226 E ¼ yard



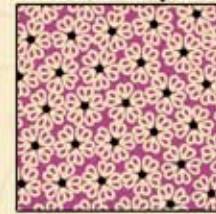
21227 J ¼ yard



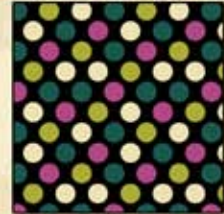
21222 Q ¼ yard



21222 V ¼ yard



21227 P ¼ yard



21226 J ¼ yard



21224 H 1¼ yards



21227 H 3⅝ yards
includes backing



21222 P ¼ yard



21221 H ¼ yard



21224 E ¾ yard

Designed by Janice Averill
Finished size 53" x 53"

CUTTING DIRECTIONS

WOF-width of fabric, from selvage to selvage

21277 J- Cut 2 strips, 2" x WOF. From strips, cut 2 pcs-9 ½" long, cut 5 pcs-6 ½" long. **7 pieces total.**

21277 H-Cut 4 strips, 2" x WOF. From strips, cut 5 pcs-9 ½" long, cut 10 pcs-6 ½" long. **15 pieces total.**

From the remaining fabric, cut 2 pieces 1 1/3" yards long for the backing. With right sides together sew along the selvage edge with a 1" seam. Trim seam to ½" and press open.

21227 P-Cut 2 strips, 2" x WOF. From strips, cut 9 pcs-6 ½" long and cut 1 pc-3 ½" long. **10 pieces total.**

21221 H-Cut 1 strip 2" x WOF. From strips, cut 3 pcs-9 ½" long, cut 3-3 ½" long. **6 pieces total.**

21221 J- Cut 2 strips, 2" x WOF. From strips, cut 1 pc-9 ½" long, cut 6 pcs-6 ½" long. **6 pieces total.**

21224-EV-Cut 2 strips, 2" x WOF. From strips, cut 1 pc-9 ½" long, cut 5 pcs-6 ½" long and cut 1 pc-3 ½" long. **7 pieces total.**

21224 E- Cut 11 strips, 2 ¼" x WOF. From 3 strips, cut 12- 9 1/2" long. Cut 5 strips- 2 ¼" x 41 ¾" long. Sew the remaining 3 strips together and cut 2 pcs-2 ¼" x 45 ½" long. **19 pieces total.**

21224 H- Cut 7 strips, 3 ½" X WOF. From 1 strip, cut 8- 3 ½" x 3 ½" squares. Sew the remaining 6 strips together and cut 2 pcs-3 ½" x 47 ¼" long and cut 2 pcs- 3 ½" x 53 ¼" long. Cut 6 strips- 2 ½" WOF. Sew these together end to end for the binding.

21224 P- Cut 1 strip, 3 ½" WOF. From strip, cut 8- 3 ½" x 3 ½" squares.

Cut 5 strips 1 ½" WOF. Sew the strips together and cut 2 pcs- 1 ½" x 45 ¼" long and cut 2 pcs-3 ½" x 47 ¼" long.

21226 E- Cut 2 strips, 2" x WOF. From strips, cut 12 pcs-3 ½" long.

21226 J- Cut 1 strip, 2" x WOF. From strips, cut 1 pc-9 ½" long, cut 3 pcs-6 ½" long and cut 3-3 ½" long. **7 pieces total.**

21222 Q-Cut 2 strips, 2" x WOF. From strips, cut 6 pcs-9 ½" long, cut 1 pc, 6 ½" long and cut 2 pcs-3 ½" long. **9 pieces total.**

21222 P- Cut 2 strips, 2" x WOF. From strips, cut 3 pcs-9 ½" long, cut 5 pcs-6 ½" long and cut 1 pc-3 ½" long. **9 pieces total.**

21222 V- Cut 2- strips, 2" x WOF. From strips, cut 4 pcs-9 ½" long, cut 6 pcs- 6 ½" **10 pieces total.**

21225 H- Cut 3 strips, 2" x WOF. From strips, cut 5 pcs- 9 ½" long, cut 3 pcs-6 ½" long and cut 1 pc-3 ½" long. **13 pieces total.**

21225 P- Cut 2 strips, 2" WOF. From strips, cut 2 pcs-9 ½" long, cut 3 pcs-6 ½" long and cut 2 pcs-3 ½" long. **7 pieces total.**

21223 QH-Cut 2 strips, 2" WOF. From strips, cut 7 pcs-6 1/2" long and cut 2 pcs-3 ½" long. **9 pieces total.**

Cut extra 3 ½", 6 ½" & 9 ½" pieces from the left over 2" strips, so you may change the blocks, if desired.

mod floral

LAURA ASHLEY.

Block Assembly: Block size 9" x 9"

Sort 2" wide rectangles into stacks, sort by size first (3 1/2, 6 1/2" & 9 1/2"), and then sort by color. You should also have 2 stacks of 3 1/2" squares, pink and green. Following the block images in the quilt picture, group the necessary pieces for each block together, place each in a separate zip lock bag.

All seam allowances are 1/4"

Press all seams away from center

1. Sew 2, 2" x 3 1/2" rectangles to each side of the 3 1/2" x 3 1/2" square.

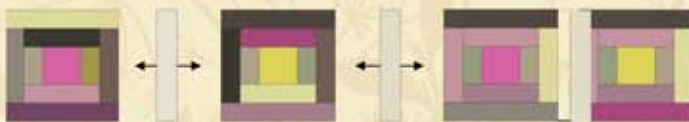


3. Sew 2, 2" x 6 1/2" rectangles to each side of the block, as shown below.

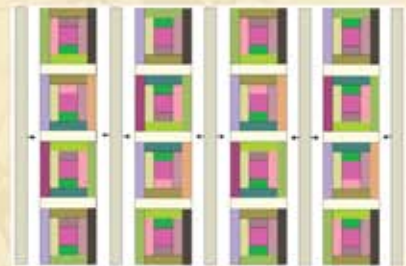


Adding the Sashing-press all seams towards the last piece sewn.

1. Layout the blocks as shown in the finished quilt image or as desired. Sew 3 cream, 2 1/4" x 9 1/2" rectangles between 4 blocks as shown. Press the seams away from the blocks. Make four rows.



2. Sew the 5 cream 2 1/4" x 41 3/4" rectangles between the rows and on each side of the rows, as shown.



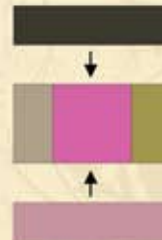
Adding the Borders-press all seams towards the last piece sewn.

1. Sew 2 pink, 1 1/2" x 45 1/4" long rectangles to sides of the quilt top. Then sew 2 pink, 1 1/2" x 47 1/4" long rectangles to top and bottom of the quilt top.

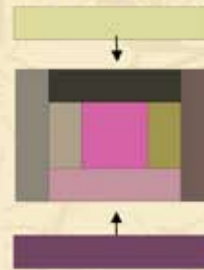
2. Sew 2 green, 2 1/2" x 47 1/4" long rectangles to sides of the quilt top. Then sew 2 green, 3 1/2" x 53 1/4" long rectangles to top and bottom of the quilt top.

Layer, quilt and bind.

2. Sew 2, 2" x 6 1/2" rectangles to the top and bottom of the block, as shown.



4. Sew 2, 2" x 9 1/2" rectangles to the top and bottom of the block, as shown below. Repeat steps 1-4 to make the other blocks. Make 16 blocks.



3. Sew the 2 1/4" x 45 1/4" rectangles to the top and bottom of the rows, as shown.

