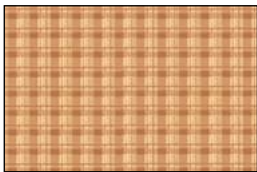


Country Road

Warren Kimble



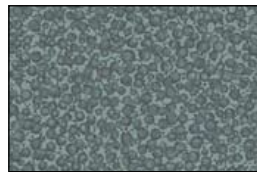
Finished Size: 67" x 76"



20303-EA
 $\frac{3}{4}$ yard



20385-E
 $\frac{1}{2}$ yard



20388-B
 $1\frac{5}{8}$ yards



20385-B
 $\frac{3}{8}$ yard



20386-R
 $1\frac{1}{4}$ yards



20385-R
 $\frac{3}{8}$ yard



20383-G
 1 yard



20388-A
 $\frac{5}{8}$ yard



20382-ER
 $2\frac{7}{8}$ yards



20381-G
 $4\frac{1}{2}$ yards (backing)

Designed by Vicki Niro

Skill Level: Beginner

Finished Block Size: 9"

Cutting:

20303 EA (ecru)

Cut 4 strips, 3½" x 3½" x WOF

Subcut (32) squares, 3½" x 3½"

Cut 2 strips 4" x WOF

Subcut (16) squares, 4" x 4"

20385 E (ecru rooster)

Cut 2 strips, 4" x WOF

Subcut (16) squares, 4" x 4"

Cut 1 strip, 3½" x WOF

Subcut (8) squares, 3½" x 3½"

20388 B (blue) 2nd Border

Cut 6 strips, 3½" x WOF

Subcut (24) squares, 3½" x 3½"

Cut 2 strips, 4" x WOF

Subcut (12) squares, 4" x 4"

Cut 8 strips 3½" x WOF for 2nd Border

20385 B (blue rooster)

Cut 2 strips, 4" x WOF

Subcut (12) squares, 4" x 4" and

(6) squares, 3½" x 3½"

20386 R (red, binding)

Cut 3 strips, 3½" x WOF

Subcut (24) squares, 3½" x 3½"

Cut 2 strips, 4" x WOF

Subcut (12) squares, 4" x 4"

Cut 7 strips 2½" x WOF for binding

20385 R (red rooster)

Cut 2 strips, 4" x WOF

Subcut (12) squares, 4" x 4" and

(6) squares, 3½" x 3½"

20383 G (green house)

Cut 3 strips, 9½" x WOF

Subcut (2) squares, 9½" x 9½"

(2) rectangles, 9½" x 36½"

20388 A (brown) (1st border)

Cut 8 strips, 2" x WOF

20382 ER (3rd border)

Cut 8 repeats of desired border print by WOF.

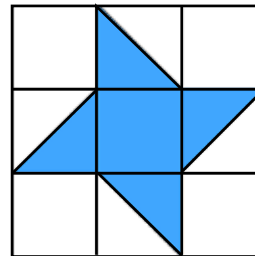
Sewing:

1. Seam allowances are standard ¼"

2. Use color picture as placement guide for color choices.

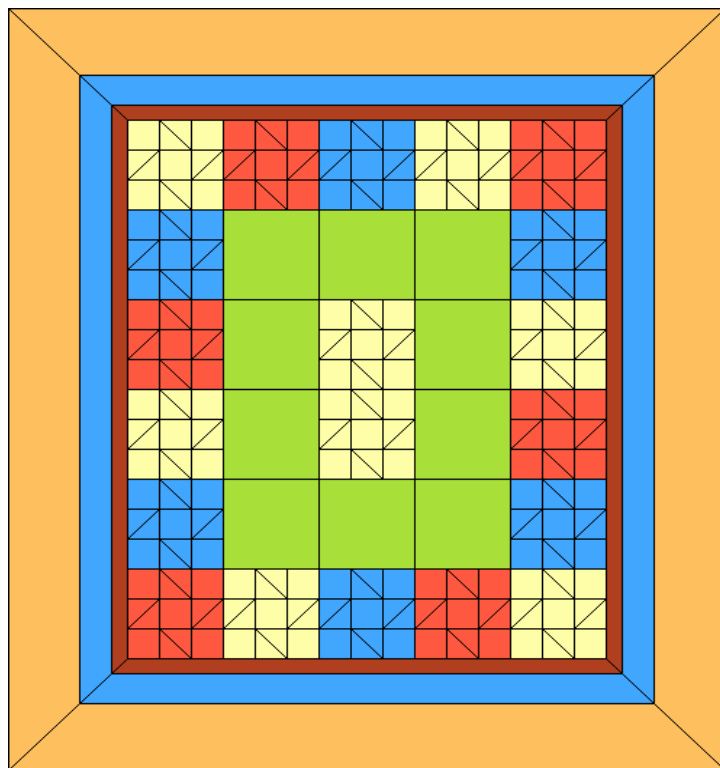
Draw a diagonal line from corner to corner on all Background 4" x 4" squares. Match right sides together with coordinating Rooster 4" x 4" squares. Make half square triangles (HST) by sewing ¼" on each side of the drawn line. Cut squares apart on

drawn line and press towards the Background. Trim HST to 3½" x 3½" square. Separate by colors to make Friendship Star Blocks. You will need (4) Background Squares, 3½" x 3½", (4) HST and (1) Rooster Square, 3½" x 3½", for each block. Layout squares following pattern below. You will need (8) Ecru, (6) Blue and (6) Red Friendship Stars.



Sew, (2) Ecru Stars together with a Green House, 9 ½" x 9 ½" square at each short end. This will make a vertical, Center Row. Add a Green House, 9 ½" x 36 ½" strips to each long side of the Center Row. You now need to make (6) Star Units. Sew a Red Star to a Blue Star to an Ecru Star. Attach a Star Unit to the top bottom of the Center Row. The remaining 4 Star Units need to be attached to the long sides of the Center Row. Alternate the block colors as they go around the quilt.

Add borders: a miter corner extends the diagonal line of the friendship star, this is a great visual effect.



©Warren Kimble® for Quilting Treasures™

Spr/07 Not for Resale

While all possible care has been taken to ensure the accuracy of this pattern, we are not responsible for printing errors or the way in which individual works varies.