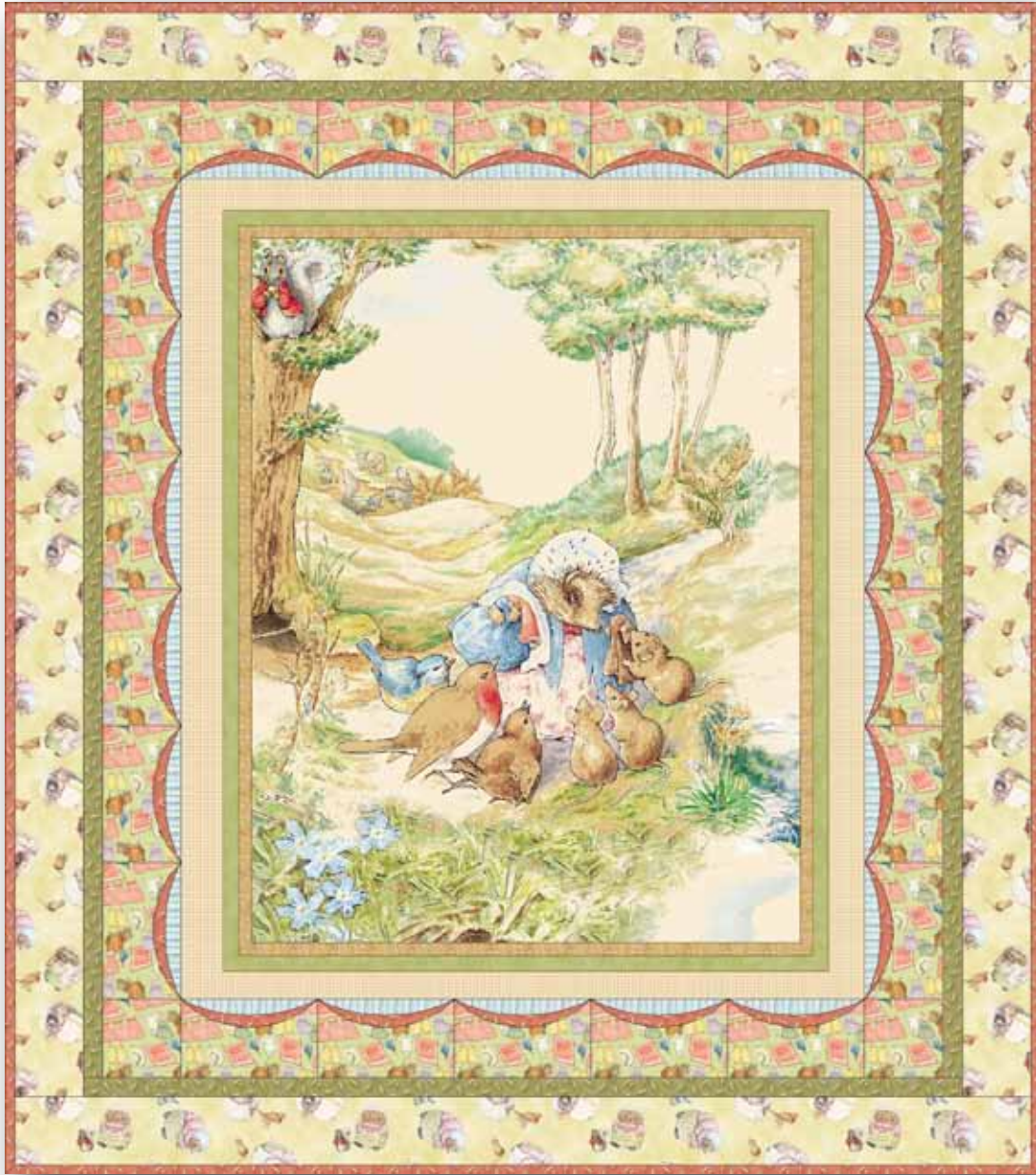


Mrs Tiggy Winkle



Finished Size: 52" x 59"



22003 AH



22009 B



22008 H



22007 H



22008 C



22006 S



22005 H

**FABRIC
REQUIREMENTS**

Design	Yards
22003 AH	1 PANEL
22009 B	$\frac{7}{8}$
22008 H	$\frac{3}{8}$
22007 H	$1\frac{1}{4}$
22008 C (binding)	$1\frac{3}{4}$
22006 S	$\frac{7}{8}$
22005 H (backing)	4

Quilt Designed by: Vicki Niro
Skill Level: Intermediate

Note: Unless noted, measurements are given in inches and seam allowance is $\frac{1}{4}$ ". Strips are cut selvedge to selvedge. **RST** = right sides together **WST** = wrong sides together **WOF** = width of fabric **using spray starch or sizing prior to cutting will help stabilize the fabric when making bias cuts.

Cutting and Fabric Preparation:

1. 22007H - Green Clothesline:

- Cut (1) $4\frac{1}{2}$ " strip. Subcut (4) $4\frac{1}{2}$ " squares.
- Cut (1) 30" square (bias borders).

2. 22006S - Character Toss:

- Cut (6) 4" strips.

3. 22009B - Blue Stripe:

- Cut (5) $4\frac{1}{2}$ " strips.

4. 22008C - Coral Clothespins:

- Cut (1) 30" square (bias borders).
- Cut (6) $2\frac{1}{2}$ " strips.

5. 22008H - Green Clothespins:

- Cut (5) $1\frac{1}{2}$ " strips.

6. 22003AH - Panel:

- Fussy cut panel $35\frac{1}{2}$ " x $42\frac{1}{2}$ ", centering the panel image. If necessary, the selvedge may be included in this measurement and incorporated into the seam allowance.

Curved Border Assembly:

7. Green Clothesline: Using continuous bias method, create 190" of continuous bias strips. Subcut (2) $4\frac{1}{2}$ " x $35\frac{1}{2}$ " and (2) $4\frac{1}{2}$ " x $42\frac{1}{2}$ " strips for one side of the Cathedral Window style border.

8. Coral Clothespins: Using continuous bias method, create 190" of continuous bias strips. Subcut (2) $4\frac{1}{2}$ " x $35\frac{1}{2}$ " and (2) $4\frac{1}{2}$ " x $42\frac{1}{2}$ " strips for one side of the Cathedral Window style border.

9. RST, sew long edge of (1) $4\frac{1}{2}$ " x $35\frac{1}{2}$ " 22008C Coral Clothespins to (1) $4\frac{1}{2}$ " x $35\frac{1}{2}$ " 22007H. Press the seam allowance open; press again with **WST**. Pressed strip should have Coral Clothespins print on one side and 22007H Green Clothesline print on the other side.

10. Repeat Steps #7 - #9 with remaining $4\frac{1}{2}$ " x $35\frac{1}{2}$ " 22007H and 22008C strips, and then with the (2) $4\frac{1}{2}$ " x $42\frac{1}{2}$ " 22007H and 22008C strips.

11. Blue Stripe: Sew the (5) $4\frac{1}{2}$ " strips together end to end, at a 45-degree angle. Cut (2) $4\frac{1}{2}$ " x $35\frac{1}{2}$ " strips and (2) $4\frac{1}{2}$ " x $42\frac{1}{2}$ " strips.

12. Place (1) of the $4\frac{1}{2}$ " x $35\frac{1}{2}$ " two sided strip created in Steps #7 - 9 on the right side of a $4\frac{1}{2}$ " x $35\frac{1}{2}$ " Blue Stripe strip, with the Green Clothesline fabric facing up, matching up long raw edges. Note: Blue Stripe $\frac{1}{4}$ " seam allowance should extend beyond finished edge of Green Clothesline strip.



13. Baste raw edges with scant $\frac{1}{4}$ seam allowance.

14. Repeat with remaining $4\frac{1}{2}$ " x $35\frac{1}{2}$ " Blue Stripe and $4\frac{1}{2}$ " x $35\frac{1}{2}$ " two sided strip, creating (2) bias top/bottom borders.

15. Repeat Steps #12 - #14 with the $4\frac{1}{2}$ " x $42\frac{1}{2}$ " Blue Stripe strips and the two sided $4\frac{1}{2}$ " x $42\frac{1}{2}$ " strips created in Steps #7 - #11, creating (2) bias side borders.

16. Sew (1) $4\frac{1}{2}$ " Green Clothesline square to each end



of the top/bottom bias border. Press toward the $4\frac{1}{2}$ " square. Repeat with the remaining top/bottom bias border.

17. Beginning with the bias side borders, measure $\frac{1}{4}$ " from the end of the border and mark with a pin on the finished side of the strip.

18. Measure 7" from the pin in Step #17; mark with a pin. Repeat (5) more times; you will have a total of (7) pins. The first pin should be $\frac{1}{4}$ " in from the end of the strip, and the last pin should be $\frac{1}{4}$ " from the opposite end of the strip.

19. At each pin, tack the edge of the bias strip to the



Blue Stripe strip just above the ¼” Blue Stripe seam allowance. Remove the pins.

20. Gently fold back the finished edge of the Green Clothesline fabric onto itself to create a curve. You will be exposing the Red Clothespin fabric. This is bias cut,



so you can make the curve as deep as you like. The tacking stitches will hold the ends of the curves in place.

21. Press your curves.

22. Topstitch each curve in place or hand tack in place.



Decorative stitching can be used to embellish. If using a straight stitch, lengthen the stitch length to 3 or 3.5 mm.

23. Repeat with remaining side border strips.

24. For the top/bottom bias borders begin at the left seam intersection of the 4 ½” square and the bias border strips, measure 7” from the seam and put a pin. From this pin, measure 7” and place another pin. Repeat (2) more times; you will have a total of (4) pins in the side border.

25. Repeat Steps #19 - #23 to mark, create and stitch your curved side borders.

Quilt Top Assembly:

26. Sew the Curved Side Borders created in Steps #15 - #23 to the left and right sides of quilt center, placing the bias curves against the quilt center. Press toward the quilt center.

27. Sew the Curved Top/Bottom Borders created in Steps #24 – 26 to the top and bottom of the quilt center, placing the bias curves against the quilt center. Press toward the quilt center.

28. 22008H Green Clothespins: Sew the (5) 1 ½” strips together end to end, at a 45-degree angle. Cut (2) 1 ½” x 45 ½” strips and (2) 1 ½” x 50 ½” strips.

29. Sew a 22008H Green Clothespins 1 ½” x 50 ½” strip to the left and right side of the quilt. Press away from the quilt center.

30. Sew a 22008H Green Clothespins 1 ½” x 45 ½” strip to the top and bottom of the quilt. Press away from the quilt center.

31. Sew the (6) 22006S Character Toss 4” strips together end to end, at a 45-degree angle. Cut (4) 4” x 52 ½” strips.

32. Sew a Character Toss 4” x 52 ½” strip to the left and right side of the quilt. Press away from the quilt center.

33. Sew a 22006S 4” x 52 ½” strip to the top and bottom of the quilt. Press away from the quilt center.

Finishing the Quilt:

34. Cut the 22005H Allover Scenic print backing fabric into (2) 2 yard long pieces.

35. Using a ¼”–½” seam allowance, sew the two pieces of backing fabric together, along the long side. Press the seam open.

36. Center and lay the batting on top of the wrong side of the backing fabric

37. Center and lay the pieced quilt top on top of the batting.

38. Pin or baste the quilt sandwich using your preferred method for securing the layers.

39. Quilt as desired.

40. Use the (6) 22008C Red Clothespins 2 ½” binding strips to bind the quilt.

