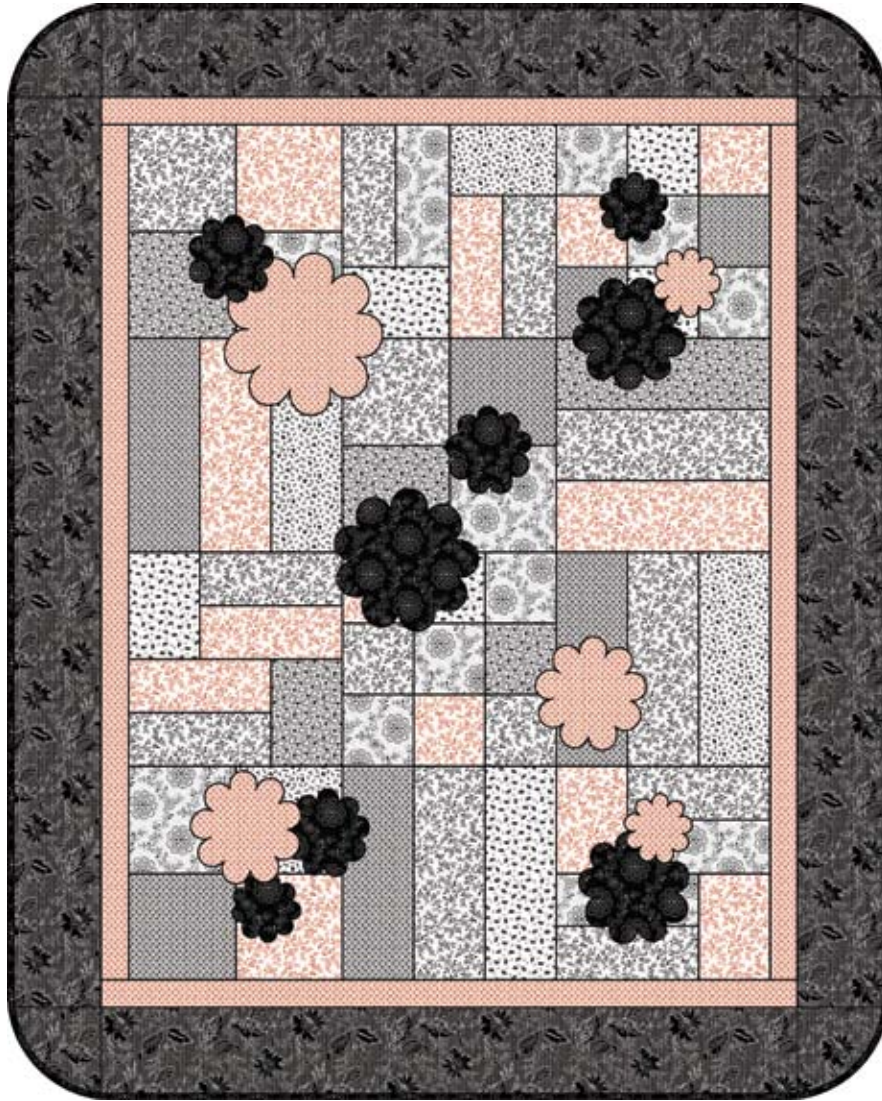


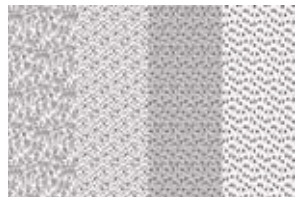
Blanc et Noir



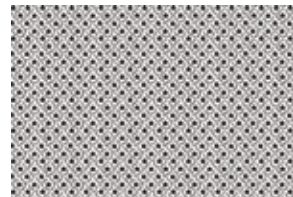
Finished Quilt: 49" x 61"



20445-ZR 1/2 yard



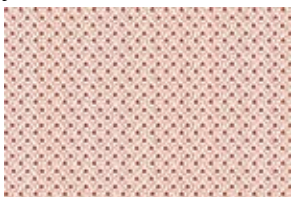
20442-ZJ 1 yard



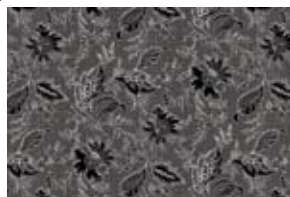
20468-ZJ 1/3 yard



20466-ZJ 1/2 yard



20468-ZR 3/4 yard



20469-JZ 4 1/2 yards



20466-JZ 1 yard

remaining fabric is for backing

Blanc et Noir by Marie Osmond

Quilt Designed by Vicki Niro

Skill Level: Beginner

Finished Quilt Size: 49" x 61"

Finished Block size: 12" x 12"

Fabric Requirements/Cutting:

Red Vine Floral, #20445-ZR – 1/2 yard

- Cut – (1) 6-1/2" x WOF
- Subcut – (2) 4-1/2" x 4-1/2" and (2) 6-1/2" x 6-1/2"
- Cut – (1) 3-1/2" x WOF
- Subcut – (3) 3-1/2" x 8-1/2" and (4) 4-1/2" x 4-1/2"
- Cut – (1) 4-1/2" x WOF
- Subcut – (2) 4-1/2" x 12-1/2"

White/Black Floral Stripe, #20442-ZJ – 1 yard

Follow the salvage when cutting and mix up the cuts between all 4 of the floral stripes. You want variety in the quilt.

- Cut – (5) 6-1/2" x 6-1/2" and (7) 4-1/2" x 12-1/2"
- (4) 4-1/2" x 6-1/2" and (6) 3-1/2" x 8-1/2"
- (6) 4-1/2" x 4-1/2"

Small White/Black Floral, #20468-ZJ – 1/3 yard

- Cut – (1) 4-1/2" x WOF
- Subcut – (3) 4-1/2" x 12-1/2"
- Cut – (1) 6-1/2" x WOF
- Subcut – (2) 6-1/2" x 6-1/2" and (2) 4-1/2" x 4-1/2"

White/Large Black Floral, #20466-ZJ – 1/2 yard

- Cut – (1) 6-1/2" x WOF
- Subcut – (3) 6-1/2" x 6-1/2"
- Cut – (2) 4-1/2" x WOF
- Subcut – (6) 4-1/2" x 4-1/2" and (3) 3-1/2" x 8-1/2"

Red Floral, #20468-ZR – 3/4 yard

- Cut – (6) 2" x WOF (inner border)
- Appliqué flowers – various sizes

Black Lace Doily, #20469-JZ – 4-1/2 yards

- Cut – (8) 5-1/2" x WOF (outer border)
- Remaining fabric is for Backing.

Black/Large White Floral, #20466-JZ – 1 yard

- Cut – (8) 2-1/2" x WOF (binding)
- Appliqué Flowers – various sizes

Embellishments – netting, lace, buttons, beads, ribbon

Search your sewing room and let your imagination GO!!

Block Assembly – all seams are sewn with a 1/4" seam allowance.

Block 1 – Rail Fence

Each block uses 3, 4-1/2" x 12-1/2" rectangles. Sew the long edges together and press in one direction. Make 4.

Block 2 – Alternative Rail Fence

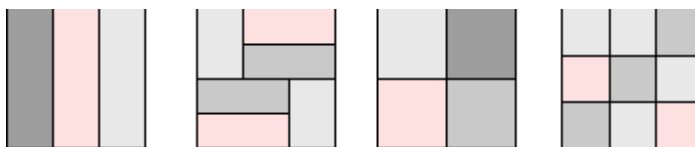
Each block uses 4, 3-1/2" x 8-1/2" rectangles and 2, 4-1/2" x 6-1/2" rectangles. Sew 2, 3-1/2" x 8-1/2" rectangles on the long edge, press towards the red rectangle. Make 2. Sew this unit to the long side of the 4-1/2" x 6-1/2" rectangle, press towards the 4-1/2" x 6-1/2" rectangle. Make 2. Sew these 2 pieced rectangles together, press in either direction. Make 3.

Block 3 – Simple Four Patch

Each block uses 4, 6-1/2" x 6-1/2" squares. Sew 2 squares together, press in either direction. Make 6. Sew 2 of these units together, nestle the center seam, press in either direction. Make 3.

Block 4 – Nine Patch

Each block uses 9, 4-1/2" x 4-1/2" squares. Sew 3 blocks together to make a row. Make 6 rows. Press 4 rows to the right and 2 rows to the left. Sew 3 rows together to make a block. The top row and bottom will be pressed towards the right and the middle row to the left. This row placement will help you nestle the seams. Make 2.



Block 1

Block 2

Block 3

Block 4

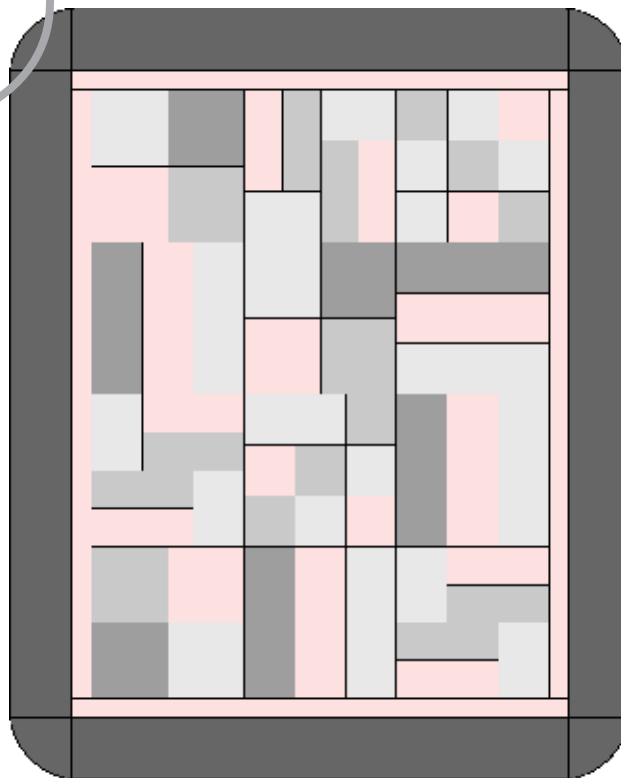
Quilt Center – following the block layout below, sew 3 blocks together to make 1 row. Make 4 rows. Press row 1 and 3 to the right and row 2 and 4 to the left. This will help you nestle the seams when you sew the rows together. Sew the rows together to make the quilt center.

Inner Border – sew the short sides together of 2 Red Floral, 2" x WOF, making 1 long strip, repeat. Trim these strips to 2" x 48-1/2" and sew to the sides of the quilt center. Trim the remaining 2 Red Floral, 2" x WOF to 2" x 39-1/2" and sew to the top and bottom of the quilt center.

Outer Border – sew the short sides of 2 Black Lace Doily, 5-1/2" x WOF, making 1 long strip, repeat 3 more times. Trim 2 of these strips to 5-1/2" x 51-1/2" and sew to the sides of the quilt. Trim the remaining 2 strips to 5-1/2" x 49-1/2" and sew to the top and bottom of the quilt. Take this border one step further and curve the corners. Use the edge of a dinner plate to draw a curved cutting line onto each corner.

Appliqués – use the provide template to make a number of different size appliqué rosettes. Attach these rosettes to the quilt using your favorite appliqué method or go one step further. Embellish each rosette with lace, ribbons, beads, and buttons creating a 3 dimensional effect. If you decide to make your rosettes dimensional attach them after the quilt and has been layered and quilted.

Layer and finish the quilt with your favorite method.



Marie Osmond ©2007 for Quilting Treasures

While all possible care has been taken to ensure the accuracy of this pattern, we are not responsible for printing errors or the way in which individual work varies.