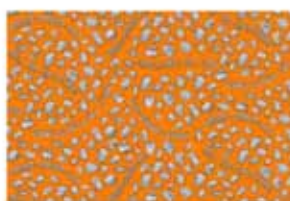


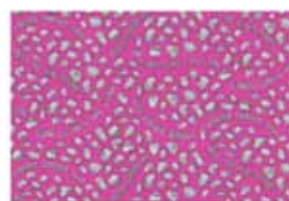
Size: 51" x 61"



20675-O 1 yard



20703-O ½ yard



20703-V ½ yard



20680-S ½ yard



20679-Q 1¼ yard



20677-B 3½ yard  
Backing

## Flintstones Quilt

Designed by Barb Mapes

Skill Level: Beginner

Finished size 51" x 61"

### Fabric Requirements:

20675-O 1 panel

20677-B 3 ½ yards for backing

20679-Q 1¼ yards outside borders

20680-S ½ yard striped border

20703-O ½ yard orange border

20703-V ½ yard for binding

Twin size batting

Cutting sizes include seam allowances.

20675-O, Trim off side borders so panel measures 34"W x 34½"L

20680-S, Cut 2 of B 34" x 5½"

20703-O, Cut 2 C1 44" x 2½". Cut 2 C2 37½" x 2½"

20679-Q, Cut 2 D3 47½" x 6½". Cut 2 D4 49" x 6½"

20703-V, Cut 6 2¼" strips for binding

20677-B, Cut 2 62" x 45"

### Sewing:

Seam allowances are standard ¼"

Sew B to top and bottom of panel

Sew C1 to right and left side of panel

Sew C2 to top and bottom of panel

Sew D3 to left and right sides of C1

Sew D4 to top and bottom of C2 unit

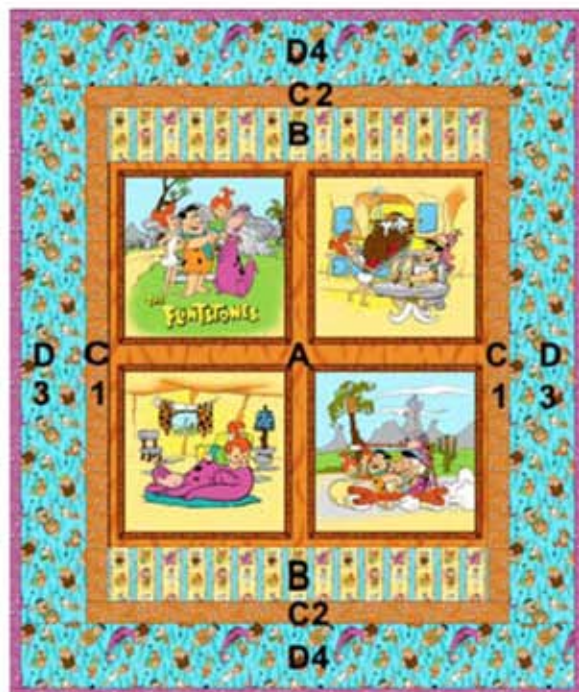
### Binding:

Sew the 2¼" wide ends of the 6 binding strips together to form one long binding strip. Fold in half lengthwise and press.

### Backing:

Sew together the 2, 62" lengths to form a 62" x 90" backing. Trim the 90" width to 72" by removing 9" from each side. Press center seam open. Trim off approximately 16" from the length of the batting also. Both the batting and the backing should be approximately 62" x 72".

Layer top, batting and back. Baste, quilt and attach binding.



*While all possible care has been taken to ensure the accuracy of this pattern, we are not responsible for printing errors or the way in which an individual work varies.*