

# The Gossip Chain



Size: 86" x 86"



20523-B  
1 Panel



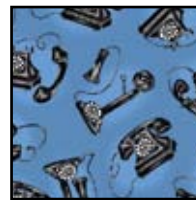
20524-Z  
½ Yard



20525-B  
1 Yard



20527-S  
¾ Yard



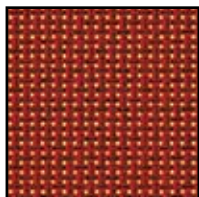
20527-B  
¾ Yard



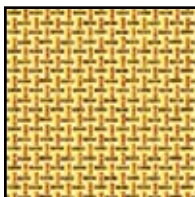
20527-G  
¾ Yard



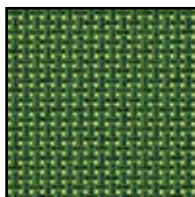
20527-R  
¾ Yard



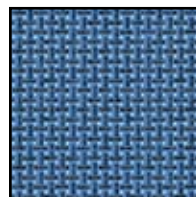
20529-R  
1½ Yards  
inc. binding



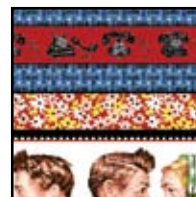
20529-S  
¾ Yard



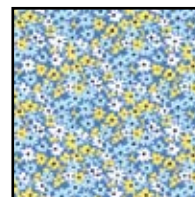
20529-G  
¾ Yard



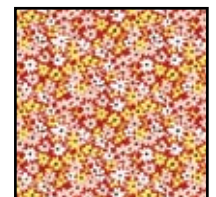
20529-B  
¾ Yard



20526-Z  
1 Yard



20528-B  
¾ Yard



20528-R  
7¾ Yards  
inc. backing

# The Gossip Chain

Designed by Karla Schulz

Skill Level: Beginner

Quilt Size: 86" x 86"

Block Size: 8" Pieced blocks; Pictures & Center square 16"

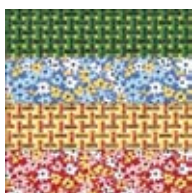
## Cutting:

- 20523-B 4 - pictures, cut each 16½" square
- 20524-Z 1 - 12½" square
- 20529-G 6 - 2½" strips for strip sets  
2 - 2½" strips for border
- 20529-S 6 - 2½" strips for strip sets  
2 - 2½" for border
- 20529-R 6 - 2½" strips for strip sets  
2 - 2½" for border  
11 - 2½" strips for binding
- 20529-B 6 - 2½" strips for strip sets  
2 - 2½" for border
- 20528-B 6 - 2½" strips for strip sets
- 20528-R 6 - 2½" strips for strip sets
- 20525-B 6 - 4½" strips for strip sets
- 20526-Z 8 - 3½" strips for border
- 20527-R 1 - 2½" x 12½" frame/center square  
3 - 6½" for border
- 20527-B 1 - 2½" x 12½" frame/center square  
3 - 6½" for border
- 20527-S 1 - 2½" x 16½" frame/center square  
2 - 6½" strips for border
- 20527-G 1 - 2½" x 16½" frame/center square  
2 - 6½" strips for border

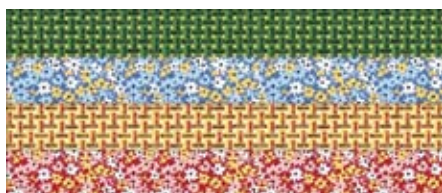
## Piecing the blocks:

Seam allowances are ¼"

1. Sew 2½" strips of green check, blue flower, yellow check and red flower together. Make 6 strip sets. Press seams toward green check. Cut 22 - 8½" blocks from strip sets.



8½" blocks



Strip Set

2. Sew 2½" red check, 4½" blue faces and 2½" blue check strips together. Make 6 strip sets. Press seams away from center strip. Cut 22 - 8½" blocks from strip sets.



8½" blocks



Strip Set

3. Sew 2½" x 12½" red and blue telephone strips to opposite sides of center square. Sew 2½" x 16½" green and yellow telephone strips to top and bottom of center square. Press seams toward strips.



## Quilt Assembly:

1. Sew blocks into rows. Press seams in direction of arrows.
2. Join the rows to complete the pieced center.
3. Sew blue and red check borders to sides as shown. Trim even with top and bottom. Sew yellow and green check borders to top and bottom. Trim even with sides. Press seams toward border strips.
4. Add striped borders in the same manner.
5. Sew outer borders in the same manner to complete the top.
6. Layer, quilt and bind.



*While all possible care has been taken to ensure the accuracy of this pattern, we are not responsible for printing errors or the way in which individual work varies.*