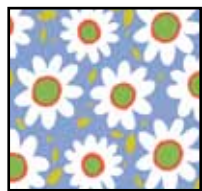




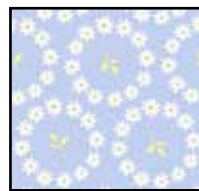
Finished Size: 61" x 73"



21913-B



21914-R



21914-B



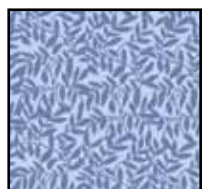
21915-H



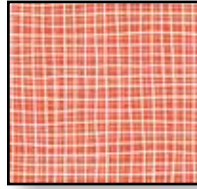
21912-W



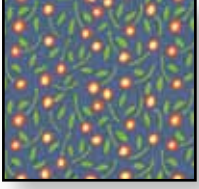
21917-H



21916-B



21917-R
inc binding



21918-N (backing)

FABRIC REQUIREMENTS	
DESIGN	YARDS
21913 B	$\frac{3}{8}$
21914 R	$\frac{5}{8}$
21914 B	1
21915 H	$\frac{7}{8}$
21912 W	1½
21917 H	½
21916 B	1
21917 R (inc binding)	1
21918 N (backing)	4½

Designed by Sue Harvey and Sandy Boobar
of Pine Tree Country Quilts
Finished Block Size: 12" x 12"

CUTTING

WOF = Width of Fabric

Blue daisy print, 21913-B

- 2 strips 4 1/2" x WOF; cut into (10) 4 1/2" A squares

Red flower print, 21914-R

- 3 strips 4 7/8" x WOF; cut into (20) 4 7/8" squares, then cut in half diagonally to make 40 B triangles

Light blue print, 21914-B

- 5 strips 4 7/8" x WOF; cut into (40) 4 7/8" squares, then cut in half diagonally to make 80 C triangles
- 1 strip 5 1/4" x WOF; cut into (5) 5 1/4" squares, then cut twice diagonally to make 20 F triangles

Yellow-green print, 21915-H

- 4 strips 4 7/8" x WOF; cut into (30) 4 7/8" squares, then cut in half diagonally to make 60 D triangles
- 1 strip 5 1/4" x WOF; cut into (5) 5 1/4" squares, then cut twice diagonally to make 20 E triangles

Blue floral, 21912-W

- 2 strips 4 1/2" x WOF; cut into (10) 4 1/2" G squares
- 7 strips 5 1/2" x WOF (outer border)

Yellow-green plaid, 21917-H

- 5 H strips 2 1/2" x WOF (strip sets)

Medium blue print, 21916-B

- 5 I strips 2 1/2" x WOF (strip sets)
- 3 strips 4 7/8" x WOF; cut into (20) 4 7/8" squares, then cut in half diagonally to make 40 J triangles

Red plaid, 21917-R

- 6 strips 2" x WOF (inner border)
- 7 strips 2 1/4" x WOF (binding)

PIECED BLOCKS

1. Sew a light blue C triangle to a red B triangle. Press seam to the B side. Repeat to make 20 BC units total. Repeat with light blue C triangles and yellow-green D triangles to make 40 CD units. (Fig. 1)

Figure 1



2. Sew a yellow-green E triangle to a light blue F triangle. Press seam to the E side. Sew to a red B triangle. Press seams to the B side. Repeat to make 10 BEF units total and 10 reversed BEF units total. (Fig. 2)

Figure 2



3. Sew a CD unit to opposite sides of a BEF unit. Press seams toward the CD units. Sew a BC unit to one side and a BEF unit to the opposite side of a blue daisy A square. Press seams toward A. Sew a CD unit to opposite sides of a BC unit. Press seams toward the CD units. Sew the pieced strips together to complete a 12 1/2" x 12 1/2" Pinwheel block. Press seams toward the center strip. Repeat to make 5 blocks total. Repeat with reversed BEF units to make 5 reversed Pinwheel blocks. (Fig. 3)

Figure 3



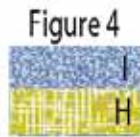
Make 5 Pinwheel Blocks



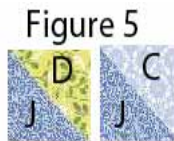
Make 5 reversed Pinwheel Blocks

4. Sew a yellow-green H strip lengthwise to a medium blue I strip. Press toward the I strip. Repeat to make 5 strip sets total. Crosscut the strip sets into (40) 4 1/2" HI units.

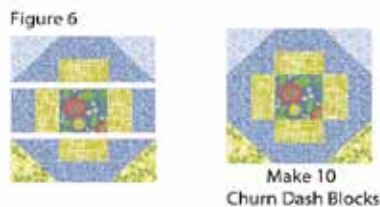
(Fig. 4)



5. Sew a yellow-green D triangle to a medium blue J triangle. Press seam to the J side. Repeat to make 20 DJ units total. Repeat with light blue C triangles and medium blue J triangles to make 20 CJ units. (Fig. 5)



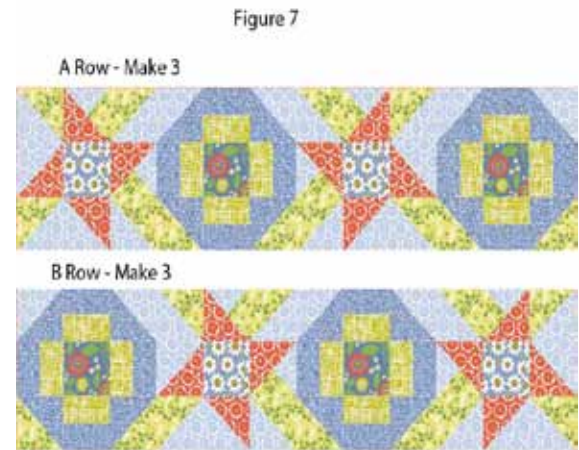
6. Sew a CJ unit to opposite sides of an HI unit. Press seams toward the HI unit. Sew an HI unit to opposite sides of a blue floral G square. Press seams toward the HI units. Sew a DJ unit to opposite sides of an IH unit. Press seams toward the HI unit. Sew the pieced strips together to complete a 12 1/2" x 12 1/2" Churn Dash block. Press seams away from the center strip. Repeat to make 10 blocks total. (Fig. 6)



While all possible care has been taken to ensure the accuracy of this pattern, we cannot be responsible for errors in printing or the way in which individual work varies.

QUILT CENTER

1. Sew a Pinwheel block, a reversed Pinwheel block and 2 Churn Dash blocks together to make an A row. Press seams toward the Churn Dash blocks. Repeat to make 3 A rows total. Repeat to make 2 B rows. (Fig. 7)



2. Sew the A and B rows alternately together to complete the 48 1/2" x 60 1/2" quilt center. Press seams in one direction.

BORDERS

1. Sew the red plaid strips short ends together to make a long strip. Cut (2) 60 1/2" strips and (2) 51 1/2" strips. Sew the longer strips to the long sides and the shorter strips to the top and bottom. Press seams toward the strips.

2. Sew the blue floral strips short ends together to make a long strip. Cut (2) 63 1/2" strips and (2) 61 1/2" strips. Sew the longer strips to the long sides and the shorter strips to the top and bottom. Press seams toward the strips.

Layer, quilt as desired, and bind using the red plaid binding strips.