

Spice Cats



Approximate Finished Size: 56" x 72"



21840 J



21841 E



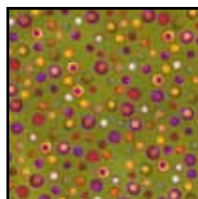
21842 J



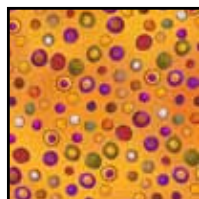
21843 J



21843 V



21844 G



21844 O



21845 E



21846 A



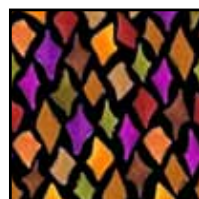
21846 O



21846 R



21846 V



21847 J

FABRIC REQUIREMENTS	
Design	Yards
21840 J (3 full rows of cat images)	$\frac{3}{4}$
21841 E	$\frac{1}{8}$
21842 J	$\frac{1}{2}$
21843 J	$\frac{1}{4}$
21843 V	$\frac{1}{4}$
21844 G	$\frac{1}{4}$
21844 O	$\frac{5}{8}$
21845 E	$\frac{1}{4}$
21846 A	$\frac{1}{4}$
21846 O	$\frac{1}{4}$
21846 R (inc binding)	$\frac{3}{4}$
21846 V	$\frac{5}{8}$
21847 J	$\frac{1}{4}$
21842 J (backing)	$4 \frac{3}{8}$

Quilt designed by Phyllis Dobbs

Finished Size: 55½" x 77½"

Skill level: Advanced Beginner

Cutting WOF = Width of Fabric

21840 J Spice Cats panel- Fussy cut three 7¾" x 42½" strips, centering the cat images and including ¼" seam allowance at the top and bottom of the strips.

21841 E Spice Cats Toss- Cut (7) 5¼" x WOF strips. Join strips together and sub cut (2) 5¼ x 65" and (2) 5¼" x 56" (*outer border*)

21842 J Black Jewel Stripe Cut (3) 4½" x WOF strips. Sew together and subcut (2) 4½" x 46½" strips (*top and bottom inner border*). Trim remainder of strip to 3½" wide and sub cut (4) 3½" x 3½" squares (*pieced block rows*).

21843 J Black Multi Floral Cut (1) 3½" x WOF strip. Sub cut (5) 3½" x 3½" squares (*pieced block rows*)

21843 V Fuchsia Multi Floral Cut (1) 3½" x WOF strip. Sub cut (5) 3½" x 3½" squares (*pieced block rows*)

21844 G Green Double Dot Cut (1) 3½" x WOF strip. Sub cut (9) 3½" x 3½" squares (*pieced block rows*)

21844 O Orange Double Dot Cut (1) 3½" x WOF strip. Sub cut (5) 3½" x 3½" squares (*pieced block rows*). Cut (6) strips 2" x 42½" (*sashing*).

21845 E Ecru Muslin Stripe Cut (1) 3½" x WOF strip. Sub cut (5) 3½" x 3½" squares (*pieced block rows*)

21846 A Nutmeg Pepper Dots Cut (1) 3½" x WOF strip. Sub cut (4) 3½" x 3½" squares (*pieced block rows*)

21846 O Orange Pepper Dots Cut (1) 3½" x WOF strip. Sub cut (5) 3½" x 3½" squares (*pieced block rows*)

21846 R Red Pepper Dots Cut (1) 3½" x WOF strip.

Sub cut (9) 3½" x 3½" squares (*pieced block rows*)
Cut (7) 2½" strips. Stitch together. Fold wrong sides together, lengthwise and press (*binding*).

21846 V Fuchsia Pepper Dots Cut (9) 2½" x WOF strips. Sub cut (6) 2½" x 42½" (*sashing and first inner top and bottom border*). Sew together 3 remaining strips and sub cut (2) 2½" x 55½" strips (*first inner side border*)

21847 J Black Diamonds Cut (1) 3½" x WOF strip. Sub cut (5) 3½" x 3½" squares (*pieced block rows*)

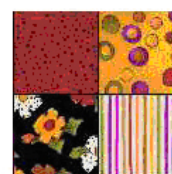
Construction:

Sew with ¼" seam allowance and all fabrics right sides together. Press each seam toward the darker fabric as you sew.

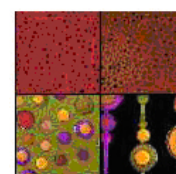
1. Sew 3 ½" squares together to make the number of blocks below in the arrangements shown. Sew 2 squares together, then sew two 2-square units together to make each block.



5 Blocks

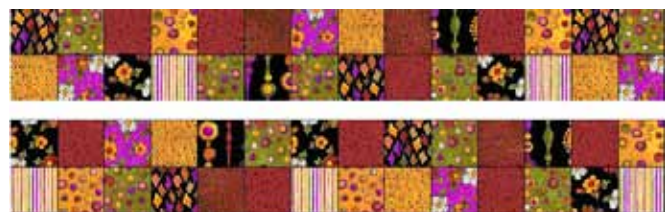


5 Blocks



4 Blocks

2. Sew 7 blocks together to make a row. Sew 2 rows in the combinations shown below.



3. Sew a 42 ½" Orange Double Dots strip to the top and bottom edges of each cat block panel piece.

Make 3 Rows



4. Sew the cat block rows and the pieced block rows together with the 42 ½” Fuchsia Pepper Dots strips in the arrangement shown below.



5. Sew a 55½” Fuchsia Pepper Dots piece to each side edge. Trim edges even with quilt top, if necessary.



6. Sew a 46 ½” Black Jewel Stripe piece to the top and bottom edges.

7. Sew a 65” Spice Cats Toss border piece to each side edge. Trim even with top if necessary. Sew the 56” Spice Cats Toss border pieces to the top and bottom edges.



Prepare Backing: Cut two pieces of backing fabric 78” x WOF. Sew together with 1” seam allowance along the selvage. Trim seam allowance to ½” and press open.

Layer and quilt as desired.

Binding:

Sew ends of binding strips together diagonally to form a continuous strip to go all the way around the quilt edge. Sew binding to the front edge of the quilt, right sides together. Miter the corners. Turn the binding to the back and fold a ¼” hem under. Hand stitch the binding to the back.

While all possible care has been taken to ensure the accuracy of this pattern, we are not responsible for printing errors or the way in which individual work varies.