

Finished Size: 70" x 86"



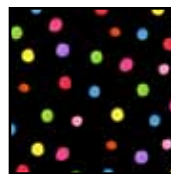
21960 R



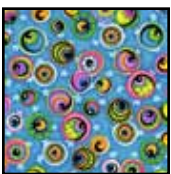
21966 Y



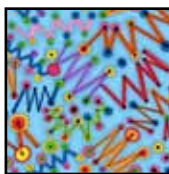
21966 H



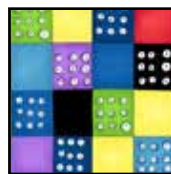
21965 J



21962 B



21963 B



21964 BJ



21963 J

FABRIC REQUIREMENTS	
Design	
21960 R	
21966 Y (inc binding)	
21966 H	
21965 J	
21962 B	
21963 B	
21964 BJ	
21963 J (backing)	

## Monsters - Boy

Finished Quilt: 70" x 86"

Quilt Designed by Sue Harvey and Sandy Boobar, Pine Tree Country Quilts

**Note:** Unless noted, measurements are given in inches and seam allowance is  $\frac{1}{4}$ ". Strips are cut selvedge to selvedge. **RST** = right sides together **WST** = wrong sides together **WOF** = width of fabric

### Cutting and Fabric Preparation:

#### 1. 21966-Y Blue tonal:

- Cut (4)  $8\frac{1}{2}$ " strips. Subcut (16)  $8\frac{1}{2}$ " A squares.
- Cut (6)  $4\frac{1}{2}$ " strips. Subcut (48)  $4\frac{1}{2}$ " B squares.
- Cut (7)  $2\frac{1}{2}$ " strips.
- Cut (8)  $2\frac{1}{4}$ " strips.

#### 2. 21966-H Green tonal:

- Cut (5)  $2\frac{1}{2}$ " strips (C).

#### 3. 21965-J Black dot:

- Cut (5)  $2\frac{1}{2}$ " strips (D).
- Cut (9)  $2\frac{1}{2}$ " strips. Subcut into (76)  $2\frac{1}{2}$ " x  $4\frac{1}{2}$ " rectangles (E).

#### 4. 21962-B Blue eyeball print:

- Cut (3)  $8\frac{1}{2}$ " strips. Subcut (12)  $8\frac{1}{2}$ " F squares.

#### 5. 21963-B Blue zigzag print:

- Cut (1)  $8\frac{1}{2}$ " strip. Subcut (4)  $8\frac{1}{2}$ " G squares.

#### 6. 21964-BJ Blue patchwork print:

- Cut (8)  $5\frac{1}{2}$ " strips.

### Block Assembly:

7. Trace 16 circles on the paper side of the fusible web using the pattern given. Cut out each circle leaving a margin around the outside. Cut out the inside of each circle leaving a 1" ring on the inside of the traced line.

8. Fuse the rings to the wrong side of the 21960R monster print.

9. Cut out each circle on the marked line. Do not cut out the center of the fabric circles. Remove the paper backing.

10. Fold each Blue tonal A square in quarters and crease to mark the center of each edge. Repeat with the fabric circles. Place a circle on each A square matching the creased lines. Fuse the circles to the A squares (Diagram A).

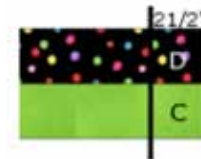


**Diagram A -  
"A" Square  
with Fused Circle**

11. Machine-stitch around the edge of each circle to complete the Monster blocks. Cut away the A fabric behind the circle, if desired.

12. Sew a Black dot D strip to a Green tonal C strip. Press to the D strip. Repeat with remaining D and C strips to create (5) strips sets.

13. Subcut the strip sets into (76)  $2\frac{1}{2}$ " CD segments (Diagram B).



**Diagram B - CD  
Segment**

14. Sew the CD segment created above to a Black dot E,  $2\frac{1}{2}$ " x  $4\frac{1}{2}$ " rectangle. Press seams to the E rectangle (Diagram C). Repeat to make (76) Corner Units.



**Diagram C  
Corner Unit**

15. Sew a Corner Unit to a Blue tonal B square, using the diagram for placement. Press seams to the B square.



**Diagram D**

Repeat with all (48) B squares (Diagram D).

**16.** Sew (2) Corner Unit/B square sets together to create a Four Patch Block (Diagram D). Repeat with all (48) Corner Unit/B square sets to make (24) Four Patch blocks. Block should measure 8 ½” square.

**17.** Using the remaining (28) Corner units, sew (2) corner units together to form a strip. Repeat to make (14) strips.

**18.** Sew (2) Corner Unit strips together to make a Four Corner block (Diagram E). Repeat with remaining



Diagram E – Four Corner Block

Corner Unit strips to make (7) Four Corner blocks.

## Quilt Top Assembly:



Diagram F

**19.** Using Diagram F as your guide, arrange the blocks with the F and G squares to make 9 rows as shown. Be sure to rotate the Four Patch blocks as shown in the diagram to create the diagonal design.

**20.** Sew the blocks together in each row. Press away from the Four Patch and Four Corner blocks.

**21.** Join the (9) rows together to complete the 56 ½” x 72 ½” quilt center. Press seams in one direction.

## Adding the Borders:

**22.** Blue tonal: Sew the (7) 2 ½” strips together end to end, at a 45-degree angle. Cut (2) 2 ½” x 60 ½” strips and (2) 2 ½” x 72 ½” strips.

**23.** Sew a Blue tonal 2 ½” x 72 ½” strip to the left and right side of the quilt. Press away from the quilt center.

**24.** Sew a Blue tonal 2 ½” x 60 ½” strip to the top and bottom of the quilt. Press away from the quilt center.

**25.** Blue patchwork print: Sew the (8) 5 ½” strips together end to end, at a 45-degree angle. Cut (2) 5 ½” x 70 ½” strips and (2) 5 ½” x 76 ½” strips.

**26.** Sew a Blue patchwork 5 ½” x 76 ½” strip to the left and right side of the quilt. Press away from the quilt center.

**27.** Sew a Blue patchwork 5 ½” x 70 ½” strip to the top and bottom of the quilt. Press away from the quilt center.

## Finishing the Quilt:

**28.** Cut the 21963-J Black zigzag print backing fabric into (2) 2 ½ yard long pieces.

**29.** Using a ¼” – ½” seam allowance, sew the two pieces of backing fabric together, along the long side. Press the seam open.

**30.** Center and lay the batting on top of the wrong side of the backing fabric

**31.** Center and lay the pieced quilt top on top of the batting.

**32.** Pin or baste the quilt sandwich using your preferred method for securing the layers.

**33.** Quilt as desired.

**34.** Use the (8) Blue tonal 2 ¼” binding strips to bind the quilt.

# Monster - Red



Finished Size: 70" x 86"



21960 R



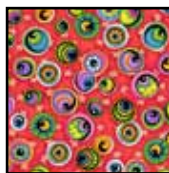
21965 Z



21966 H



21965 J



21962 R



21961 S



21964 PB



21966 R



21961 Z

FABRIC REQUIREMENTS	
Design	Yards
21960 R	1
21965 Z	1 $\frac{1}{8}$
21966 H	$\frac{1}{2}$
21965 J	1 $\frac{1}{8}$
21962 R	$\frac{7}{8}$
21961 S	$\frac{3}{8}$
21964 PB	1 $\frac{3}{8}$
21966 R (inc binding)	1 $\frac{1}{8}$
21961 Z (backing)	5 $\frac{5}{8}$

## Monsters - Girl

Finished Quilt: 70" x 86"

Quilt Designed by Sue Harvey and Sandy Boobar, Pine Tree Country Quilts

### Fabric Requirements:

**Note:** Unless noted, measurements are given in inches and seam allowance is  $\frac{1}{4}$ ". Strips are cut selvedge to selvedge. **RST** = right sides together **WST** = wrong sides together **WOF** = width of fabric

### Cutting and Fabric Preparation:

#### 1. 21965-Z White dot:

- Cut (4) 8  $\frac{1}{2}$ " strips. Subcut (16) 8  $\frac{1}{2}$ " A squares.
- Cut (6) 4  $\frac{1}{2}$ " strips. Subcut (48) 4  $\frac{1}{2}$ " B squares.

#### 2. 21966-H Green tonal:

- Cut (5) 2  $\frac{1}{2}$ " strips (C).

#### 3. 21965-J Black dot:

- Cut (5) 2  $\frac{1}{2}$ " strips (D).
- Cut (9) 2  $\frac{1}{2}$ " strips.
- Subcut into (76) 2  $\frac{1}{2}$ " x 4  $\frac{1}{2}$ " rectangles (E).

#### 4. 21962-R Red eyeball print:

- Cut (3) 8  $\frac{1}{2}$ " strips. Subcut (12) 8  $\frac{1}{2}$ " F squares.

#### 5. 21961-S Yellow puff print:

- Cut (1) 8  $\frac{1}{2}$ " strip. Subcut (4) 8  $\frac{1}{2}$ " G squares.

#### 6. 21964-PB Red patchwork print:

- Cut (8) 5  $\frac{1}{2}$ " strips.

#### 7. 21966-R Red tonal:

- Cut (7) 2  $\frac{1}{2}$ " strips.
- Cut (8) 2  $\frac{1}{4}$ " strips.

### Block Assembly:

8. Trace 16 circles on the paper side of the fusible web using the pattern given. Cut out each circle leaving a margin around the outside. Cut out the inside of each circle leaving a 1" ring on the inside of the traced line.

9. Fuse the rings to the wrong side of the 21960R monster print.

10. Cut out each circle on the marked line. Do not cut out the center of the fabric circles. Remove the paper backing.

11. Fold each White Dot A square in quarters and crease to mark the center of each edge. Repeat with the fabric circles. Place a circle on each A square matching the creased lines. Fuse the circles to the A squares. (Diagram A)



Diagram A -  
"A" Square  
with Fused Circle

12. Machine-stitch around the edge of each circle to complete the Monster blocks. Cut away the A fabric behind the circle, if desired.

13. Sew a Black dot D strip to a Green tonal C strip. Press to the Black dot D strip. Repeat with remaining D and C strips to create (5) strip sets.

14. Subcut the strip sets into (76) 2  $\frac{1}{2}$ " CD segments (Diagram B).

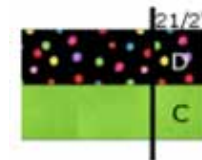


Diagram B - CD  
Segment

15. Sew the CD segment created above to a Black dot E 2  $\frac{1}{2}$ " x 4  $\frac{1}{2}$ " rectangle. Press seams to the E rectangle (Diagram C). Repeat to make (76) Corner Units.



Diagram C  
Corner Unit

16. Sew a Corner Unit to a White dot B square, using the diagram for placement. Press seams to the B square. Repeat with all (48) B squares (Diagram D).



Diagram D

# Monster - Red

17. Sew (2) Corner Unit/B square sets together to create a Four Patch Block (Diagram D). Repeat with all (48) Corner Unit/B square sets to make (24) Four Patch blocks. Block should measure 8 1/2" square.

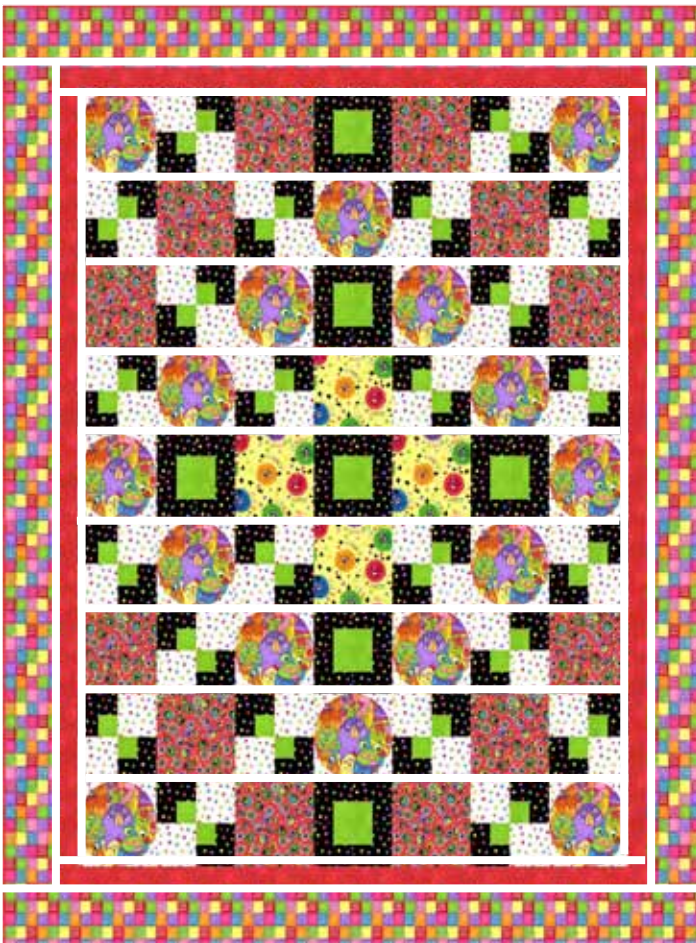
18. Using the remaining (28) Corner units, sew (2) corner units together to form a strip. Repeat to make (14) strips.

19. Sew (2) Corner Unit strips together to make a Four Corner block (Diagram E). Repeat with remaining Corner Unit strips to make (7) Four Corner blocks.



Diagram E - Four Corner Block

Diagram F



## Quilt Top Assembly:

20. Using Diagram F as your guide, arrange the blocks with the F and G squares to make 9 rows as shown. Be sure to rotate the Four Patch blocks as shown in the diagram to create the diagonal design.

21. Sew the blocks together in each row. Press away from the Four Patch and Four Corner blocks.

22. Join the (9) rows together to complete the 56 1/2" x 72 1/2" quilt center. Press seams in one direction.

## Adding the Borders:

23. 21966-R Red tonal: Sew the (7) 2 1/2" strips together end to end, at a 45-degree angle. Cut (2) 2 1/2" x 60 1/2" strips and (2) 2 1/2" x 72 1/2" strips.

24. Sew a White dot 2 1/2" x 72 1/2" strip to the left and right side of the quilt. Press away from the quilt center.

25. Sew a White dot 2 1/2" x 60 1/2" strip to the top and bottom of the quilt. Press away from the quilt center.

26. Red patchwork print: Sew the (8) 5 1/2" strips together end to end, at a 45-degree angle. Cut (2) 5 1/2" x 70 1/2" strips and (2) 5 1/2" x 76 1/2" strips.

27. Sew a Red patchwork 5 1/2" x 76 1/2" strip to the left and right side of the quilt. Press away from the quilt center.

28. Sew a Red patchwork 5 1/2" x 70 1/2" strip to the top and bottom of the quilt. Press away from the quilt center.

## Finishing the Quilt:

29. Cut the 21961-Z White puff print backing fabric into (2) 2 1/2 yard long pieces.

30. Using a 1/4" - 1/2" seam allowance, sew the two pieces of backing fabric together, along the long side. Press the seam open.

31. Center and lay the batting on top of the wrong side of the backing fabric

32. Center and lay the pieced quilt top on top of the batting.

33. Pin or baste the quilt sandwich using your preferred method for securing the layers.

34. Quilt as desired.

35. Use the (8) Red tonal 2 1/4" binding strips to bind the quilt.

*While all possible care has been taken to ensure the accuracy of this pattern, we are not responsible for printing errors or the way in which individual work varies.*



Monsters Circle Pattern