

Aunt Josie's Log Cabin Quilt



Finished size: 60" x 72"



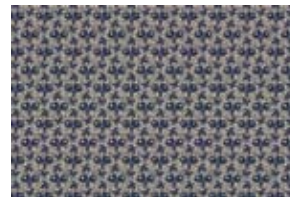
20507-M
½ yard



20504-AT
½ yard



20506-T
½ yard



20510-B
½ yard



20503-A
2½ yard



20510-A
4½ yard
(includes backing)



20511-AE
2¼ yard



20509-B
½ yard



20509-K
½ yard



20509-S
¼ yard

Aunt Josie's Log Cabin Quilt

Finished size: 60" x 72"

Designed by Mariann Simmons

Skill Level: Advanced Beginner

Finished Block Size: 12"

Yardage:

½ yard 20507-M

½ yard 20504-AT

½ yard 20506-T

½ yard 20510-B

2 ½ yards 20503-A

4 ½ yards 20510-A (includes backing)

2 ¼ yards 20511-AE

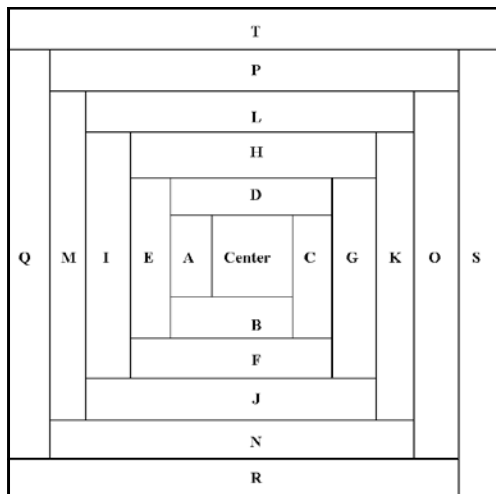
½ yard 20509-B

½ yard 20509-K

¼ yard 20509-S

Cutting:

1. From 20509-S, cut two 2 ½" strips. Subcut into 30 2 ½" squares for the centers.
2. From 20507-M, 20504-AT, 20506-T, 20510-B and 20510-A, cut 10 strips of each fabric 1 ½" x WOF. Open strips and cut five of each of the following from each fabric:
2 ½" (A), 3 ½" (B), 4 ½" (E), 5 ½" (F), 6 ½" (I), 7 ½" (J), 8 ½" (M), 9 ½" (N), 10 ½" (Q), 11 ½" (R)
These will be used for the dark half of the block.
3. From 20509-B and 20509-K, cut 10 strips of each 1 ½" x WOF. Open strips and cut 5 of each of the following from each fabric
3 ½" (C), 4 ½" (D), 5 ½" (G), 6 ½" (H), 7 ½" (K), 8 ½" (L), 9 ½" (O), 10 ½" (P), 11 ½" (S), 12 ½" (T).
These will be used for the light half of the block.



4. Using 20511-AE, cut the 4 different pattern sections apart. Cut 5 strips 1 ½" x length of fabric from each section. The brown and aqua "railroad" type print is used as a dark. Subcut these strips as in Step 2. The remaining 3 prints are considered lights. Subcut these as in Step 3.
5. From 20503-A, cut strips 1 ½" x length of fabric from each stripe. The 9 brown with white flowers stripes are treated as a dark. Using 8 of these lengths, subcut these strips as in Step 2 cutting 4 of each size. The floral portion is considered a light and is subcut as Step 3 using 10 strips and cutting 5 of each size.

Construction:

¼" seam allowance given

Press all seams away from the center block.

1. Sew first dark (A) to center square.
2. Working counter clockwise, join second dark (B) to the unit.
3. Next, add first light (C), then next light (D).
4. Continue in this manner – two darks, then two lights until five rounds are completed around the center square. Refer to diagram for sequence.
5. Construct 30 blocks in this manner.
6. Layout blocks, 5 across and 6 down in the Sunshine and Shadows setting. Join.
7. Layer top, batting and backing.
8. Quilt and bind. (Note: original quilt had backing brought to front for binding)

While all possible care has been taken to ensure the accuracy of this pattern, we are not responsible for printing errors or the way in which an individual work varies.