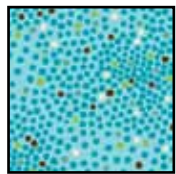




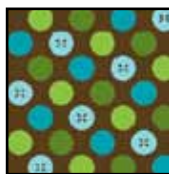
Finished Size: 44" x 62"



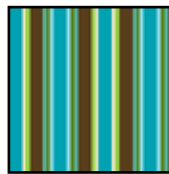
21945 Q



21953 Q



21951 A



21952 QA



21953 G



21948 EQ



21949 E



21950 A

FABRIC REQUIREMENTS

Design	Yards
21945 Q (Contempo Dots)	½
21953 Q	½
21951 A	½
21952 QA (binding)	½
21953 G	¾
21948 EQ	7/8
21949 E	1 1/8
21950 A (backing)	3

Piccadilly

Finished block size: 7" x 7"

Number of blocks: 12

Skill level: Confident Beginner

CUTTING DIRECTIONS

21945 Q Aqua Dot - Cut (1) $4\frac{3}{8}$ " x 42" strip; recut into (1) $4\frac{3}{8}$ " square. Cut the square in half diagonally to make 2 triangles for half blocks. Trim remainder of strip and cut (2) 4" squares for end units.

Cut (2) 4" x 42" strips for strip sets for Four-Patch blocks.

21953 Q Aqua Leaf Blender - Cut (1) $4\frac{3}{8}$ " x 42" strip; recut into (1) $4\frac{3}{8}$ " square. Cut the square in half diagonally to make 2 triangles for half blocks. Trim remainder of strip and cut (2) 4" squares for end units.

Cut (2) 4" x 42" strips for strip sets for Four-Patch blocks.

21951 A Brown Buttons - Cut (8) $1\frac{1}{2}$ " x 42" strips for sashing strips, and inner side and top and bottom borders.

21952 QA Stripe - Cut (6) $2\frac{1}{2}$ " x 42" strips for binding.

21953 G Green Leaf Blender - Cut (1) $4\frac{3}{8}$ " x 42" strip; recut into (4) $4\frac{3}{8}$ " squares. Cut the squares in half diagonally to make 8 triangles for half blocks. Trim remainder of strip to 4" and cut (2) 4" squares for end units. Cut (4) 4" x 42" strips for strip sets for Four-Patch blocks.

21948 EQ Packed Floral - Cut (5) $5\frac{1}{2}$ " x 42" strips for outer borders.

21949 E Tossed Floral - Cut (3) $11\frac{1}{4}$ " x 42" strips; recut into (8) $11\frac{1}{4}$ " squares. Cut each square on both diagonals to make (32) triangles; set aside (2) triangles for another project.

21950 A Brown Flower & Leaf Stripe - Cut (2) 52" lengths for backing.

SEWING

A Blocks

1. Sew a 4" x 42" strip green leaf blender to a 4" x 42" strip aqua dot along length to make a strip set. Press seams toward green strip. Repeat to make a second 42"-wide strip set.

2. Recut these pieced strip sets into a total of (12) 4" green/dot units. Diagram 1.

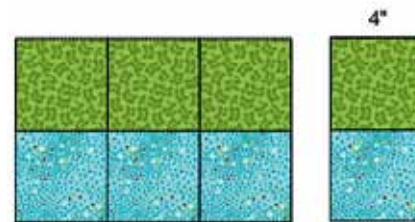


Diagram 1

3. Select two green/dot units and join to complete one A block. Press seam to one side.

4. Repeat step 3 to make a total of 6 A blocks.

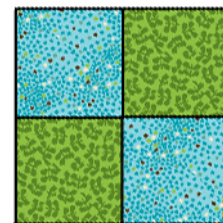


Diagram 2
A Block
Make 6

B Blocks

1. Repeat all steps for A blocks except use the aqua leaf blender and the remaining green leaf blender strips to make a total of 6 B blocks.

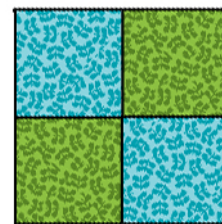
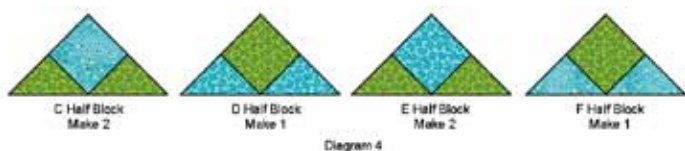


Diagram 3
B Block
Make 6

Half-Blocks

1. Select (1) 4" aqua dot square and 2 green leaf blender triangles. Sew a triangle to 2 adjacent sides of the square to complete 1 C half-block. Press seams toward the square. Repeat to make a total of 2 C half-blocks.
2. Repeat step 1 with 2 aqua leaf blender triangles and (1) 4" green leaf blender square to make 2 D half-blocks.
3. Repeat step 1 with 2 green leaf blender triangles and (1) 4" aqua leaf blender square to make 1 E half-block. Repeat to make a total of 2 E half-blocks.
4. Repeat step 1 with 2 aqua dot triangles and (1) 4" green leaf blender square to make 1 F half-block.



green leaf blender square to make 1 F half-block.

Quilt Assembly

1. Select 1 each C and E half-blocks, 2 each A and B blocks and 10 tossed floral triangles.
2. Sew a tossed floral triangle to opposite sides of each selected A and B block. Press seams toward



the triangles.

3. Sew a tossed floral triangle to 1 side of each C and

While all possible care has been taken to ensure the accuracy of this pattern, we are not responsible for printing errors or the way in which individual work varies.

E half-block to make end units referring to Diagram 6.

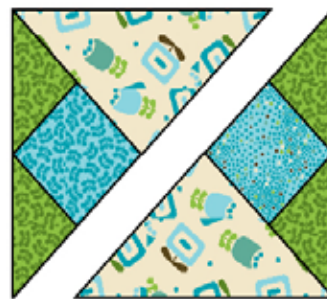


Diagram 6

Press seams toward the triangles.

4. Join the pieced units to make one vertical strip.



Diagram 7. Press seams in one direction.

5. Repeat steps 1–4, selecting D and F half-blocks for the center vertical strip and C and E triangles for the remaining vertical strip and referring to the quilt photo for positioning of the A and B blocks and the half blocks in each strip.
6. Join the 1 1/2" x 42" brown buttons strips on the short ends to make a long strip. Press seams to one side. Cut into (4) 50 1/2" sashing/border strips and (2) 34 1/2" strips for top and bottom borders. Join the vertical rows with the 50 1/2" strips referring to the quilt photo for positioning of the vertical rows. Press seams toward the brown buttons strips. Sew the 34 1/2" strips to the top and bottom. Press seams toward the strips.
7. Join the 5 1/2" x 42" strips packed floral on the short ends to make one long strip. Press seams to one side. Cut the strip into (2) 52 1/2" side strips and (2) 44 1/2" top and bottom strips. Sew the 52 1/2" strips to opposite long sides and the 44 1/2" strips to the top and bottom of the pieced center to complete the quilt top. Press seams toward the strips.
8. Remove the selvage edges from the backing pieces. Join the pieces on the long edges with a 1/2" seam allowance. Press seam open. Trim the side edges to make a 52" x 70" backing piece.
9. Layer, quilt and bind.