



## LUCY APRON

Designed by Theresa Romeo

### Materials:

Lucy's Chocolate Factory

# 20598 H Mint Tossed Hats

# 20599 P Pink Hearts

Apron ¼ Yd.

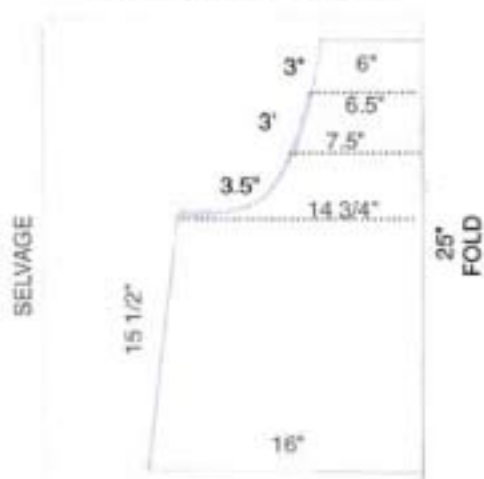
Apron Band, Pocket & Straps 2/3 Yd.

### Instructions:

1. Following the cutting diagram for the apron, cut one apron piece from the Mint Tossed Hats fabric. The dotted line markings on the diagram are to show the angle of the curve, not for drawing.
2. To make a heart pattern for the pocket, cut a piece of paper 6 ½" x 7". Fold the paper in half along the 6 ½" side. Following the illustration draw half of a heart. Cut the paper and open out for a pattern piece.
3. Cut the band, ties, heart pocket following the cutting diagram from the Pink Heart fabric.
4. Fold one tie fabric in half lengthwise with the wrong sides together. Stitch along one long side and one short side using a ½" seam allowance. Turn and press. Repeat with the remaining 3 ties pieces.
5. Fold the bottom band together lengthwise, baste the top and side raw edges together and press. With right sides together stitch the long raw edge of the band to the apron bottom. Press flat and top stitch ¼" from the seam line.
6. To hem the apron top and sides, press the sides of the apron ¼", then ¼" again and stitch close to the inner pressed edge. Repeat with the top and curved sides of the apron.
7. Fold the raw edge of each tie in ¼", then ¼" again and press the fold line. Pin the waist ties at the top edge of the waist of the apron on the wrong side of the apron. Pin the neck ties at the top of the apron on the wrong side of the apron. Stitch the ties in place as you top stitch around the top and sides of the apron 1/8" from the edge.
8. Pin the pocket pieces, wrong sides together. Stitch using a ¼" seam all around leaving a small opening on one side for turning. Clip the seams at the curves and turn. Hand stitch the opening closed and press the pocket.
9. Pin the pocket to the apron front 4 ½" from the side and 1 ½" down from the waist. Top stitch along the sides, leaving the top of the heart open.
10. Press the apron.

*While all possible care has been taken to ensure the accuracy of this pattern, we are not responsible for printing errors or the way in which an individual work varies.*

APRON CUTTING DIAGRAM



BAND, POCKET & STRAPS CUTTING DIAGRAM



HEART POCKET PATTERN

