

Old Virginia Calicos



Finished size: approx. 60" x 70"



20396-E
2½ yards



20389-R
4¼ yards (incl. backing)



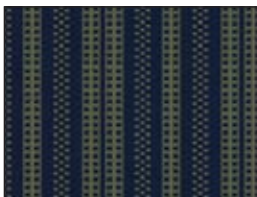
20392-R
¼ yard



20391-Q
1 yard



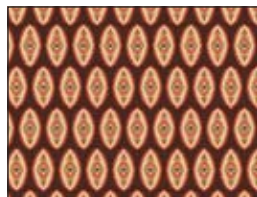
20395-EA
1 yard (incl. binding)



20397-N
1½ yards



20397-A
1 yard



20393-A
1 yard



20390-A
1 yard



20395-EC
¾ yard

Designed by Mariann Simmons
Skill Level: Expert

Cutting Instructions:

1. Center star: red (20392R) - cut one $3\frac{3}{8}$ " square. Cut six $2\frac{7}{8}$ " squares. Cut these once diagonally. Tan (background 20396E) – cut one square $5\frac{1}{4}$ ", cut twice diagonally. Cut four $2\frac{7}{8}$ " squares – cut once diagonally.

2. First border: tan check (20395EA) – cut two strips $2\frac{1}{2}$ " x $8\frac{1}{2}$ ", and two strips $2\frac{1}{2}$ " x $12\frac{1}{2}$ ".

3. Second border: Diamond in a Square. Tan – cut twelve $3\frac{1}{4}$ " squares, cut twice diagonally. Cut two squares $2\frac{7}{8}$ ", cut once diagonally for corners. Assorted fabrics – Cut twenty squares $1\frac{7}{8}$ ". Cut two squares $3\frac{1}{4}$ ". Cut twice diagonally. Cut two squares $2\frac{7}{8}$ ", cut once diagonally for corners.

4. Third border: red paisley (20389R) – cut two strips $1\frac{1}{2}$ " x $16\frac{1}{2}$ " and two strips $1\frac{1}{2}$ " x $18\frac{1}{2}$ ".

5. Fourth border: Small flying geese. From assorted fabrics, cut twelve squares $4\frac{1}{4}$ ". Cut twice diag. Tan: cut forty-eight squares $2\frac{3}{8}$ " – cut once diagonally. Corner stars: From any print, cut four squares 2". Cut sixteen squares $1\frac{5}{8}$ " - cut once diag. From tan, cut sixteen squares $1\frac{1}{4}$ ". Cut four squares $2\frac{3}{4}$ ", cut twice diagonally.

OPTIONAL: Cut 4 squares $3\frac{1}{2}$ " instead of constructing four stars.

6. Fifth border: Hour glass. From assorted prints, cut sixteen squares $4\frac{1}{4}$ ". Cut twice diagonally. Cut two squares $3\frac{7}{8}$ ", cut once diagonally for corners. From tan, cut twenty-eight squares $2\frac{5}{8}$ ". Cut two squares $4\frac{1}{4}$ ", cut twice diagonally for ends. Cut two squares $3\frac{7}{8}$ ", cut once diagonally for corners.

7. Sixth border: Sawtooth – Blue (20391Q) cut thirty-two squares $2\frac{7}{8}$ ", cut once diagonally. Tan: cut thirty-two squares $2\frac{7}{8}$ ", cut once diagonally.

8. Seventh border: Spacer. Use any print. Cut two strips $1\frac{1}{2}$ " x $34\frac{1}{2}$ " and two strips $1\frac{1}{2}$ " x $36\frac{1}{2}$ ".

9. Eighth border: Large flying geese – From assorted fabrics, cut twenty squares $5\frac{1}{4}$ ", cut twice diag.; cut eighty squares $2\frac{7}{8}$ ", cut once diagonally.

10. Ninth border – Pinwheels (top and bottom only). From assorted blue and brown prints, cut forty-four squares $2\frac{1}{4}$ ", cut once diagonally. From tan, cut forty-four squares $2\frac{1}{4}$ ", cut once diagonally. Cut ten squares $5\frac{1}{4}$ ", cut twice diagonally. Cut four squares $2\frac{7}{8}$ ", cut once diagonally.

11. Tenth border – Spacer – from tan check cut three strips $1\frac{1}{2}$ " x WOF. Join, cut two strips $52\frac{1}{2}$ ". Cut three strips $3\frac{1}{2}$ " x WOF, join, cut two strips $46\frac{1}{2}$ ".

12. Eleventh border – Streak of Lightning – From assorted dark brown and blue, cut twenty-four squares $7\frac{1}{4}$ ", cut twice diagonally. From tan, cut twelve strips $1\frac{1}{2}$ " x WOF. Subcut into $1\frac{1}{2}$ " x $4\frac{3}{4}$ " rectangles.

Construction:

$\frac{1}{4}$ " seam allowance allowed. Press seams to darker fabric.

Center Star –

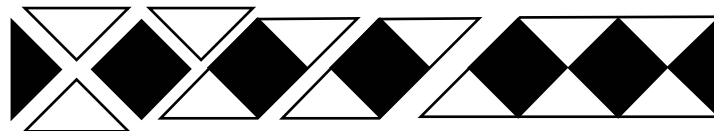
1. Sew 4 tan half square triangles to square to make center unit.
2. Sew 2 red triangles to each quarter square tan triangle to make flying geese units.
3. Sew a tan half square triangle to a red half square triangle to make corner units. Make 4.
4. Sew a flying goose unit to each side of the center unit.
5. Join a corner, goose, corner – make two. Sew to top and bottom of unit.

First Border –

1. Sew $8\frac{1}{2}$ " strips to sides of center unit and $12\frac{1}{2}$ " strips to top and bottom.

Second Border – Diamond in a Square

1. Sew units as diagrammed.



2. Repeat to make four units. Sew 2 strips to sides of center unit.
3. Sew a print triangle to a tan triangle to make four corners.
4. Add corner units to remaining strips and add to top and bottom of main unit

Third Border – Red Paisley Spacer

1. Sew $16\frac{1}{2}$ " strips to sides of center unit and $18\frac{1}{2}$ " strips to top and bottom.

Fourth Border – Small Flying Geese

1. Sew 2 tan half square triangles to each print half square triangle. Make 48 units. Sew into strips of 12 units.

Star corners –

1. Sew tan triangles to print triangles. Make four flying geese units.
2. Sew two geese units to side of square.
3. Make two square, goose, square units – sew to top and bottom of unit. Repeat to make 4 stars.

OPTION: Use four 3 ½” squares in place of stars.

4. Sew 2 strips of 12 geese to sides of main unit.
5. Sew stars (squares) to remaining strips and sew to top and bottom of unit.

Fifth Border – Hourglass

1. Sew a tan and a print half square triangle together. Make 4 corners.
2. Make four strips – sew as for second border above except with 7 full units in center.
3. Sew two strips to sides of main unit. Add corner units to remaining strips, add to top and bottom.

Sixth Border – Sawtooth

1. Sew blue and tan half square triangles together. Sew into 15 unit strips.
2. Sew two strips to sides of center unit.
3. Turn remaining squares to alternate color and sew to ends of remaining strips. Sew strips to top and bottom of unit.

Seventh Border – Spacer

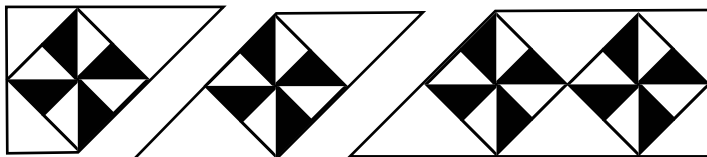
1. Sew 34 ½” strips to sides of main unit. Sew 36 ½” strips to top and bottom.

Eighth Border – Large flying geese

1. Sew 2 half square triangles to each quarter square triangle. Make 80.
2. Sew into 2 strips of 18 and 2 strips of 22 units.
3. Sew 18 unit strips to top and bottom of main unit and 22 unit strips to sides.

Ninth Border – Pinwheels

1. Sew tan and print half square triangles together. Sew 4 units together to make a pinwheel. Make 22 pinwheels.
2. Sew into 2 strips of 11 pinwheels each as diagrammed, adding half square triangles to ends. Add to top and bottom of unit.

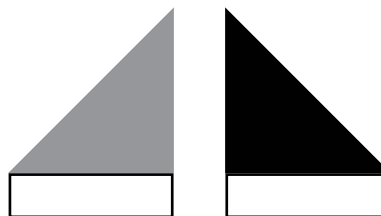


Tenth Border –

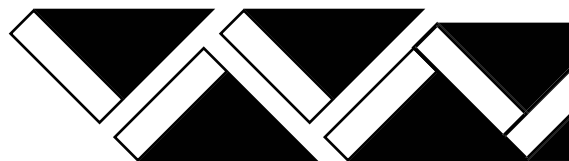
1. Sew 46 ½” units to top and bottom of quilt. Sew 52 ½” units to sides.

Eleventh Border – Streak of Lightning

1. Sew triangles and rectangles together as shown. Make 48 of each.



2. Join units into one long strip.



3. Measure quilt horizontally, through center, and cut two borders this length for side borders. Sew to each side.
4. Measure quilt vertically, through center, and cut two borders this length for top and bottom borders. Sew to each side.

NOTE: BORDER IS NOT MATHEMATICALLY COMPATIBLE TO QUILT!!!! THERE WILL BE PARTIAL UNITS AT ALL ENDS!!

Layer, quilt and bind your quilt. Binding is cut from tan check fabric. Label your quilt.

 VIRGINIA QUILT MUSEUM for Quilting Treasures™

While all possible care has been taken to ensure the accuracy of this pattern, we are not responsible for printing errors or the way in which individual works varies.