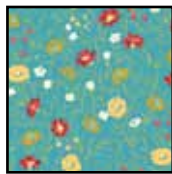


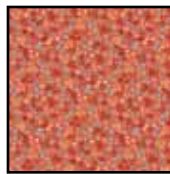
Finished Size: 46" x 46"



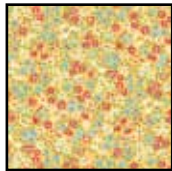
22041 E



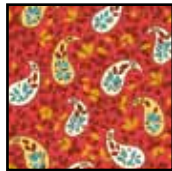
22041 Q



22044 R



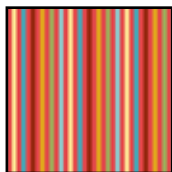
22044 S



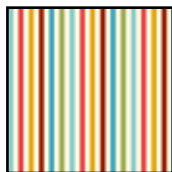
22043 R



22043 Q



22046 R



22046 E



22042 E

FABRIC REQUIREMENTS	
Design	Yards
22041 E	1½
22041 Q	¾
22044 R	½
22044 S	⅝
22043 R	½
22043 Q	¾
22046 R	¼
22046 E (binding)	⅞
22042 E (backing)	3

Heidi

Quilt designed by Janice Averill

Finished quilt size: 46" x 46"

Finished block size: 9" x 9"

Number of blocks: 12

Skill level: Advanced

Cutting Directions: WOF= Width of Fabric

Prepare templates using template plastic or other material for pieces A–E using patterns given; cut as directed below for each piece. Turn the template from 1 edge of the strip to the other to cut every other piece for A, B, C and D. Note that C is the reverse of the A piece. Carefully mark the side to be sewn to B on each A and C piece when cutting. **WOF** = width of fabric.

22041-E Cream Floral

- Cut (10) 2" x **WOF** strips; using the A and C templates, cut strips into 48 each A and C triangles.
- Cut (4) 3¼" x **WOF** strips; using the B template, cut strips into 96 B triangles.
- Cut (1) 14" x **WOF** strip; recut into (1) 14" square.
- Cut the square on both diagonals to make a total of 4 side-setting triangles. Trim the remainder of the strip to 13⅝" and cut into (2) 13⅝" squares.
- Cut each square in half on 1 diagonal to make a total of 4 corner-setting triangles.

22041-Q Blue Floral

- Cut (4) 2¼" x **WOF** strips; using the E template, cut strips into 24 E diamonds.

22044-R Red Floral

- Cut (4) 3¼" x **WOF** strips; using the D template, cut strips into 24 D triangles.

22044-S Yellow Floral

- Cut (5) 3½" x **WOF** strips.

22043-R Red Paisley

- Cut (4) 3¼" x **WOF** strips; using the D template, cut strips into 24 D triangles

22043-Q Blue Paisley

- Cut (4) 2¼" x **WOF** strips; using the E template, cut strips into 24 E triangles

22046-R Red/Multi Stripe

- Cut (4) 1½" x **WOF** strips.

22046-E White/Multi Stripe (binding)

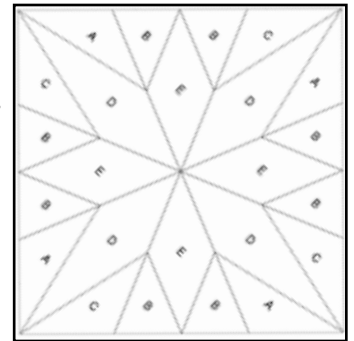
- Cut 2½"-wide bias strips to total 200" when joined.

33042-E Cream Floral (backing)

- Cut (2) 54" x **WOF** pieces for backing

Block Piecing: Refer to Block diagram for help with template placement

1. Mark a dot at the top and bottom corners at the ¼" seam intersections on the wrong side of each D and E piece.



Block Assembly
Step 1

2. Lightly mark the ¼" seam allowance on the wrong side of each A, B and C triangle. Note: The B side of each A and C triangle should already be marked.



Block Assembly
Step 2

3. Stitching on the marked seam allowances, sew a B triangle to the left edge of an E diamond to make a B-E unit. Press seam toward B. Repeat to make a total of 24 each Blue Paisley and Blue Floral B-E units.



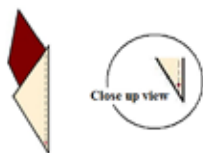
Block Assembly
Step 3

4. Repeat step 3 with B on the right edge of each B-E unit to complete the B-E-B units. Press seams toward E.



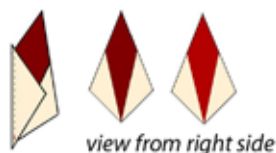
Block Assembly
Step 4

5. Sew a C piece to the right long edge of a Red Paisley D, being careful to align dots at seam ends; stitch the entire length of the piece (do not stop at the marked end of the seam) to make a C-D unit. Press seam toward D. Repeat to make a total of 24 each Red Paisley and Red Floral C-D units.



Block Assembly
Step 5

6. Sew an A piece to the left long edge of each C-D unit to complete the C-D-A units. Press seams toward A.



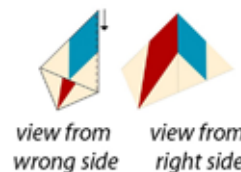
Block Assembly
Step 6

7. Sew a Blue Floral B-E-B unit to a Red Paisley C-D-A unit, starting stitching at the marked dots. Note: Shorten stitch length and take about 4 stitches before returning to normal stitch length to finish the seam. Press seam toward the B-E-B unit.



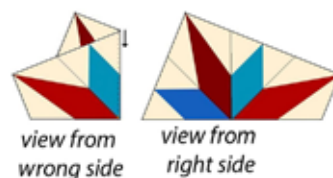
view from
wrong side view from
right side
Block Assembly
Step 7

8. Sew a Blue Paisley B-E-B unit to a Red Floral C-D-A unit as in step 7. Press seam toward the B-E-B unit.



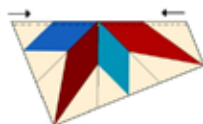
Block Assembly
Step 8

9. Place the Blue Paisley/Red Floral unit right sides together with a Blue Floral/Red Paisley unit, matching marked dots. Starting at the outer edge, shorten the stitch length before you get to the marked $\frac{1}{4}$ " seam as in step 7. **Note:** As you approach the $\frac{1}{4}$ " dot, gently fold the previously stitched seam out the way. Press the new seam toward the Red Paisley to complete a half-block unit. Repeat from step 7 to make a total of 24 half-block units.



Block Assembly
Step 9

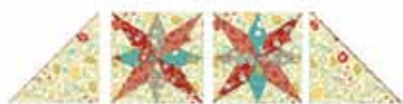
10. Starting from the outer edge and stitching to the center, and making sure that the 1/4" dots on both units are aligned with each other, join two half-block units, treating the seam the same as in steps 7–9. Press seam toward the Red Paisley. Note: Each half of this new seam will go in opposite directions to form a rosette with the points in the center on the wrong side of the block. Clip dog ears. Repeat with all half-block units to make a total of 12 blocks. Blocks should measure 9 1/2" square.



Block Assembly
Step 10

Quilt Top Assembly: Refer to quilt image for block orientation.

1. Join 2 blocks with two side-setting triangles, placing fabric pieces in blocks in the same position



Quilt top assembly
Step 1

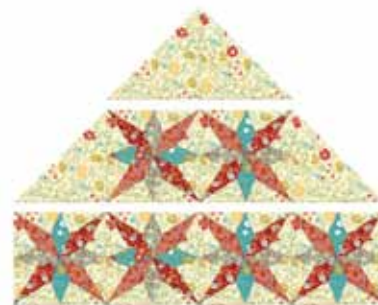
referring to the drawing. Press seams to the right.

2. Join 4 blocks, alternating the positioning of the blocks referring to the drawing. Press seams toward the left.



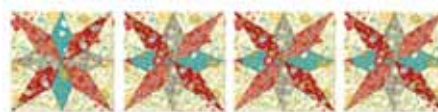
Quilt top assembly
Step 2

3. Join the 2 pieced rows. Center and sew a corner-setting triangle to the pieced section to complete half the quilt top. Press seam toward the triangle.

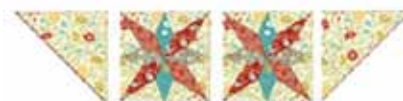


Quilt top assembly
Step 3

4. Repeat steps 1–3 to complete a second half referring to the drawings, pressing seams in rows in opposite directions from steps 1–3.



Quilt top assembly
Step 4



Quilt top assembly
Step 5

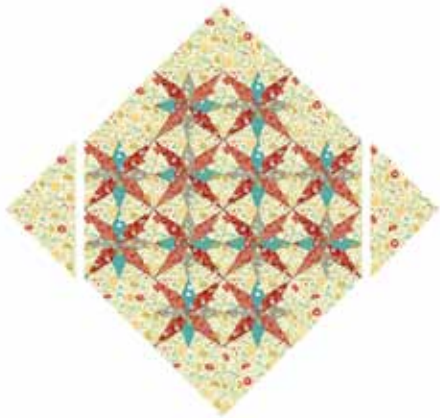


Quilt top assembly
Step 6

5. Join the 2 halves of the quilt top and add the remaining large triangles referring to the drawings. Press seam away from the large triangles. The quilt top should measure $38\frac{3}{4}$ " x $38\frac{3}{4}$ " square.



*Quilt top assembly
Step 7*



*Quilt top assembly
Step 8*

6. Join the $1\frac{1}{2}$ "-wide Red/Multi Stripe strips on the short ends to make a long strip. Press seams open. Cut the strip into (2) $38\frac{3}{4}$ " strips and (2) $40\frac{3}{4}$ " strips. Sew the shorter strips to opposite sides and longer strips to the remaining sides of the quilt center. Press seams toward the strips.

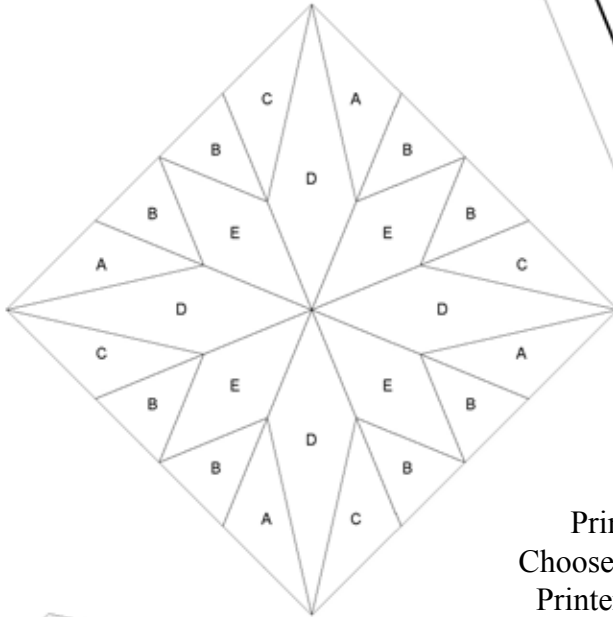
7. Join the $3\frac{1}{2}$ "-wide Yellow Floral strips on the short ends to make a long strip. Press seams open. Cut the strip into (2) $40\frac{3}{4}$ " strips and (2) $46\frac{3}{4}$ " strips. Sew the shorter strips to opposite sides and long strips to the remaining sides of the quilt center. Press seams toward the strips.

8. Join the $2\frac{1}{2}$ "-wide White/Multi Stripe bias strips on the short ends to make a long strip for binding. Press seams open.

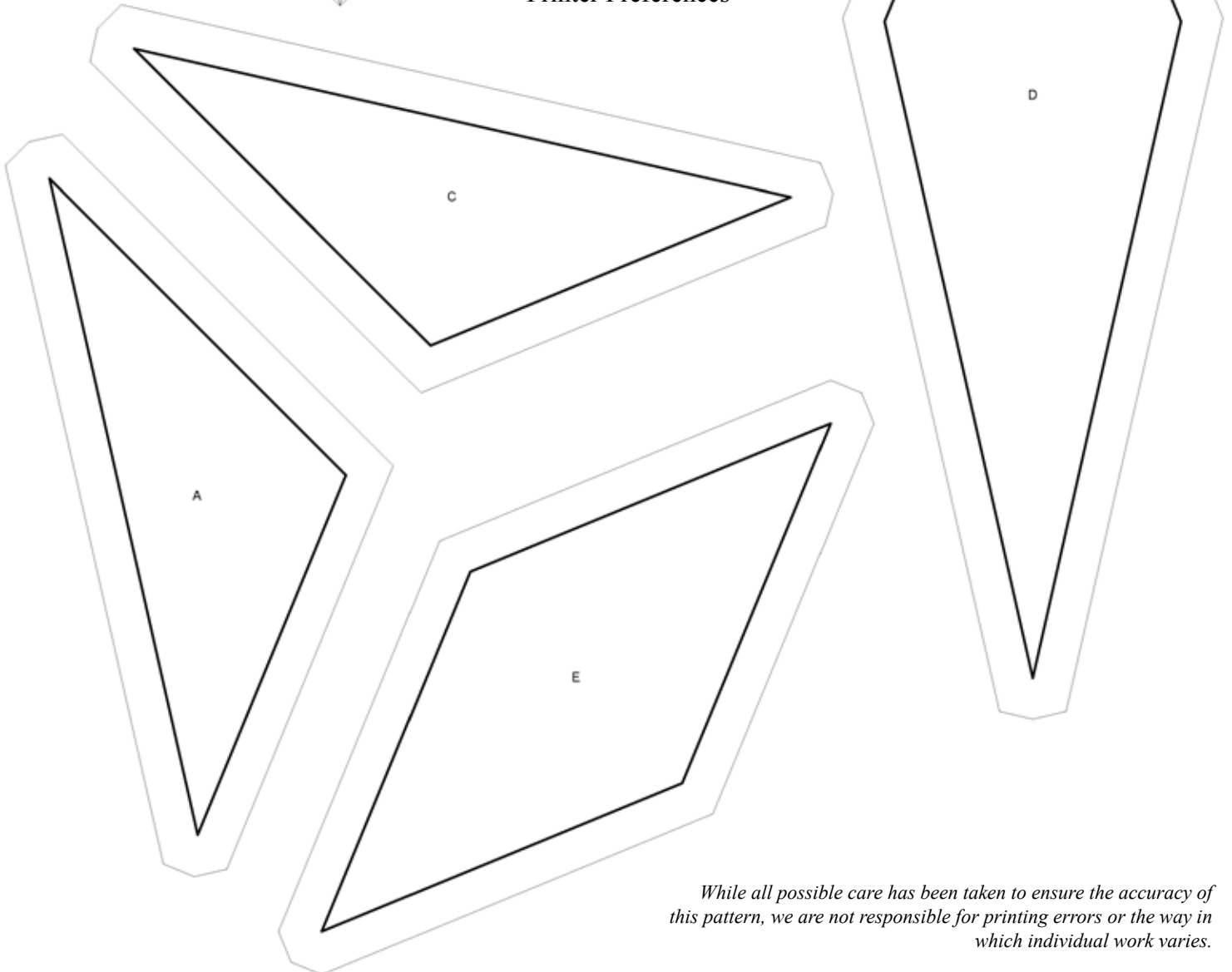
9. Remove the selvage edges from the Cream Floral backing pieces. Join the pieces on the long edges with a $\frac{1}{2}$ " seam allowance. Press seam open. Trim the side edges to make a 55 " x 55 " backing piece.

10. Layer, quilt and bind, using your favorite methods and the prepared binding strip, to complete the quilt.

Unnamed
Key Block (5/20 actual size)



Print at 100%
Choose No Scaling in
Printer Preferences



While all possible care has been taken to ensure the accuracy of this pattern, we are not responsible for printing errors or the way in which individual work varies.