

Finished Size: 106" x 106"  
 Project also includes instructions for  
 twin size quilt.



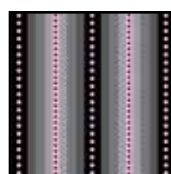
22071 K



22070 K



22074 P



22073 JK



22071 J



22074 K



22070 J

**FABRIC  
REQUIREMENTS**

Design	Yards
22071 K	3 <sup>3</sup> / <sub>4</sub>
22070 K	1 <sup>1</sup> / <sub>4</sub>
22074 P	1
22073 JK	2 <sup>3</sup> / <sub>4</sub>
22071 J	1 <sup>1</sup> / <sub>8</sub>
22074 K	<sup>3</sup> / <sub>8</sub>
22070 J	3 <sup>1</sup> / <sub>8</sub>
22071 J (backing)	9 <sup>7</sup> / <sub>8</sub>

## Jarden - Queen Size Quilt

Quilt designed by Brenda Plaster

Finished quilt size: 106" x 106"

Skill level: Confident Beginner

### Cutting Directions:

#### 22070-K - Gray floral

Cut (2) 14" x 42" strips; recut into (4) 14" squares.

Cut (6) 2¼" x 42" strips.

#### 22070-J - Black floral

Cut (3) 14" x 42" strips; recut into (9) 14" squares.

Cut (10) 6½" x 42" strips for outer border.

#### 22074-K - Gray filigree

Cut (4) 2¼" x 42" strips.

#### 22074-P - Pink filigree

Cut (13) 2¼" x 42" strips.

#### 22071-K - Gray sprig

Cut (25) 2¼" x 42" strips.

Cut (2) 2¼" x 42" strips; recut into

(24) 2¼" squares.

Cut (1) 20⅜" x 42" strip; recut into (2) 20⅜" squares. Cut the squares twice diagonally to make 8 setting triangles.

Cut (1) 10½" x 42" strip; recut into

(2) 10½" squares. Cut the squares in half diagonally to make 4 corner triangles.

#### 22071-J - Black sprig

Cut (18) 2¼" x 42" strips

Cut (2) 3¾" x 42" strips; recut into (12) 3¾" squares.

Cut the squares twice diagonally to make 48 triangles.

#### 22073-JK - Black/gray stripe

Cut (2) 4" x 94½" and (2) 4" x 87½" identical strips along the length of the fabric for inner border.

Cut bias binding from remainder of fabric using your favorite method.

#### 22070-J - Black floral

Cut (3) 114" lengths for backing.

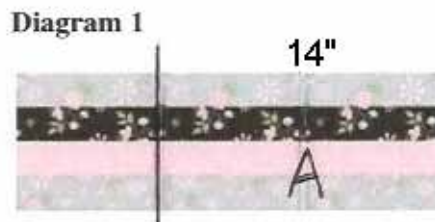
### Sashing Strips:

1. Sew 2¼" strips lengthwise together to make a strip set as follows: gray sprig to black sprig to pink filigree to gray sprig. Press seams in 1 direction.

Repeat to make 7 strip sets total.

2. Crosscut the strip sets into (20) 14" A sashing strips.

A sashing strips.

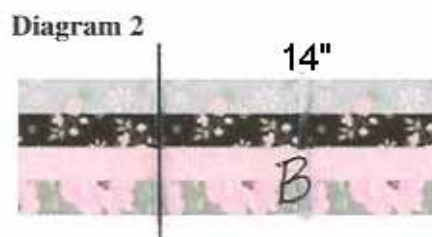


3. Sew 2¼" strips lengthwise together to make a strip set as follows: gray sprig to black sprig to pink filigree to gray floral. Press seams in 1 direction.

Repeat to make 6 strip sets total.

4. Crosscut the strip sets into (16) 14" B sashing strips.

B sashing strips.



### Sashing Squares & Triangles:

1. Sew a 2¼" black sprig strip lengthwise together with a 2¼" gray sprig strip to make a strip set. Press seam toward the black strip. Repeat to make 3 strip sets total. Crosscut the strip sets into (48) 2¼" C segments.

C segments.

C segments.

Diagram 3



2. Join 2 C segments to make a C unit. Press seam to 1 side. Repeat to make (24) C units total.

3. Sew a 2¼" black sprig strip lengthwise together

**Diagram 4**

Make 24 C Unit



with a 2¼" gray filigree strip to make a strip set. Press seam toward the black strip. Repeat to make a second strip set. Crosscut the strip sets into (36) 2¼" D segments.

4. Repeat step 3 with 2¼" gray sprig and gray

**Diagram 5**



filigree strips to make 2 strip sets and crosscut (36) 2¼" E segments.

5. Sew a D segment to an E segment to make a DE

**Diagram 6**

E Segment



unit. Press seam to 1 side. Repeat to make (36) DE units total.

6. Join 2 each C units and DE units to make a

**Diagram 7**

DE Unit

Make 36



sashing square. Press all seams to 1 side. Repeat to make (12) sashing squares total.

**Diagram 8**

Make 12



Sashing Square

7. Sew a black sprig triangle to 2 sides of each 2¼" gray sprig square. Press seams toward the triangles.

**Diagram 9**

Make 24



8. Sew a pieced triangle to 2 sides of each remaining DE unit to complete 12 sashing triangles. Press seams toward the pieced triangles.

**Diagram 10**

Make 12



Sashing Triangle

## Quilt Assembly:

Refer to the exploded quilt center diagram for steps 1–7. Note orientation of all units before sewing. Press all seams toward the sashing strips and the sashing rows.



a gray sprig corner triangle to the 4 angled edges to complete the 87 1/2" x 87 1/2" quilt center. Press seams toward the triangles.

**8.** Sew the 87 1/2" black/gray stripe strips to opposite sides and the 94 1/2" black/gray stripe strips to the remaining sides. Press seams toward the strips.

**9.** Join the 6 1/2" x 42" black floral strips on the short ends to make a long strip. Press seams to 1 side. Cut into (2) 94 1/2" strips and (2) 106 1/2" strips. Sew the shorter strips to opposite sides and the longer strips to the remaining sides. Press seams toward the strips.

**10.** Remove the selvage edges from the backing pieces. Join the pieces on the long edges with a 1/2" seam allowance. Press seams open. Trim the side edges to make a 114" x 114" backing piece.

**11.** Layer, quilt and bind, using your favorite methods and the black sprig binding strips, to complete the quilt.

**1.** Sew a sashing triangle to each end of 2 A sashing strips to make rows 1 and 11.

**2.** Join 2 A sashing strips, a 14" black floral square, and 2 gray setting triangles to make row 2. Repeat to make row 10.

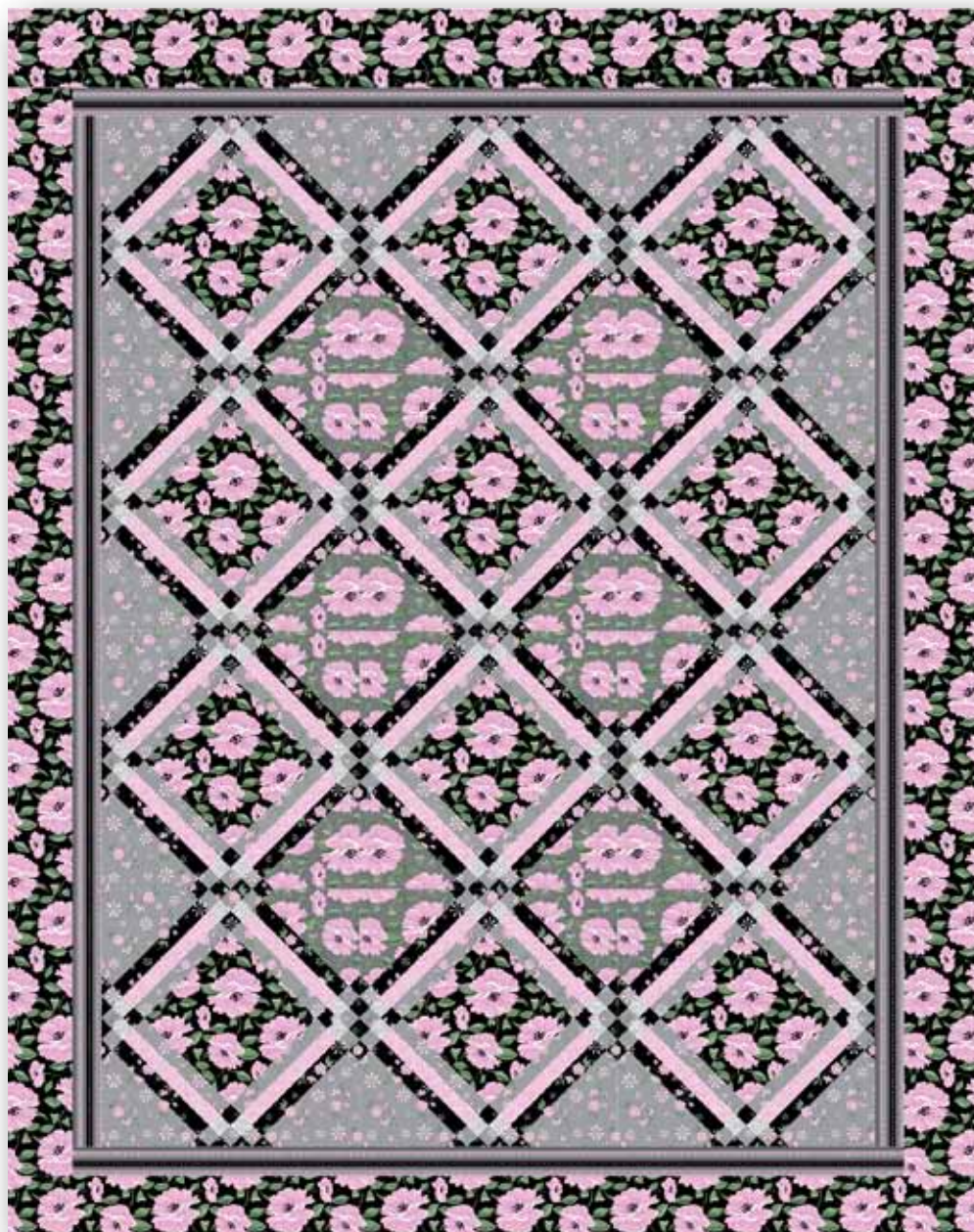
**3.** Join 2 A sashing strips, 1 B sashing strip, 2 sashing squares, and 2 sashing triangles to make row 3. Repeat to make row 9.

**4.** Join 2 A sashing strips, 2 B sashing strips, 2 black floral squares, 1 gray floral square, and 2 gray setting triangles to make row 4. Repeat to make row 8.

**5.** Join 2 A sashing strips, 3 B sashing strips, 4 sashing squares, and 2 sashing triangles to make row 5. Repeat to make row 7.

**6.** Join 2 A sashing strips, 4 B sashing strips, 3 black floral squares, and 2 gray floral squares to make row 6.

**7.** Sew the rows together in numerical order. Add



Finished Size: 69¼" x 87½"



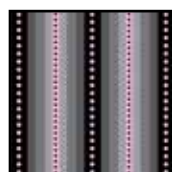
22071 K



22070 K



22074 P



22073 JK



22071 J



22074 K



22070 J



22072 P

**FABRIC  
REQUIREMENTS**

Design	Yards
22071 K	1¼
22070 K	1
22074 P	⅝
22073 JK	1⅝
22071 J	1
22074 K	¼
22070 J	2⅝
22072 P (backing)	5⅝

## Jardin - Twin Size Quilt

Quilt designed by Brenda Plaster

Finished quilt size: 69¼" x 87½"

Skill level: Confident Beginner

### Cutting Directions:

#### 22070-K - Gray floral

Cut (2) 9½" x 42" strips; recut into (6) 9½" squares.

Cut (6) 1½" x 42" strips.

#### 22070-J - Black floral

Cut (3) 9½" x 42" strips; recut into (12) 9½" squares.

Cut (8) 5½" x 42" strips for outer border.

#### 22074-K - Gray filigree

Cut (4) 1½" x 42" strips.

#### 22074-P - Pink filigree

Cut (12) 1½" x 42" strips.

#### 22071-K - Gray sprig

Cut (24) 1½" x 42" strips

Cut (1) 1½" x 42" strip; recut into (28) 1½" squares

Cut (1) 14" x 42" strip; recut into (3) 14" squares.

Cut the squares twice diagonally to make 10 setting triangles.

Cut (1) 7¼" x 42" strip; recut into

(2) 7¼" squares. Cut the squares in half diagonally to make 4 corner triangles.

#### 22071-J - Black sprig

Cut (18) 1½" x 42" strips

Cut (1) 2¼" x 42" strips; recut into (14) 2¼" squares.

Cut the squares twice diagonally to make 56 triangles.

#### 22073-JK - Black/gray stripe

Cut (2) 2½" x 74" and (2) 2½" x 59¾" identical strips along the length of the fabric for inner border.

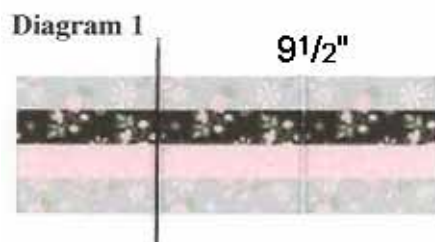
Cut bias binding from remainder of fabric using your favorite method.

#### 22070-J - Black floral

- Cut (2) 96" lengths for backing.

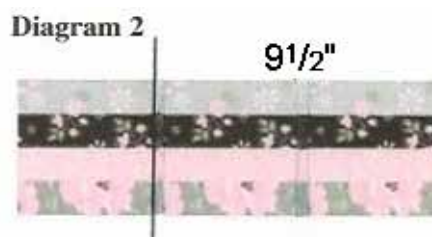
### Sashing Strips:

1. Sew 1½" strips lengthwise together to make a strip set as follows: gray sprig to black sprig to pink filigree to gray sprig. Press seams in 1 direction. Repeat to make 6 strip sets total.
2. Crosscut the strip sets into (24) 9½" A sashing strips.



3. Sew 1½" strips lengthwise together to make a strip set as follows: gray sprig to black sprig to pink filigree to gray floral. Press seams in 1 direction. Repeat to make 6 strip sets total.

4. Crosscut the strip sets into (24) 9½" B sashing strips.



## Sashing Squares & Triangles:

1. Sew a 1½" black sprig strip lengthwise together with a 1½" gray sprig strip to make a strip set. Press seam toward the black strip. Repeat to make 3 strip sets total. Crosscut the strip sets into (60) 1½" C segments.

Diagram 3



2. Join 2 C segments to make a C unit. Press seam to 1 side. Repeat to make (34) C units total.

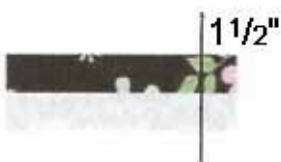


Diagram 4 C Unit  
Make 34

3. Sew a 1½" black sprig strip lengthwise together with a 1½" gray filigree strip to make a strip set. Press seam toward the black strip. Repeat to make a second strip set. Crosscut the strip sets into (44) 1½" D segments.

Diagram 5

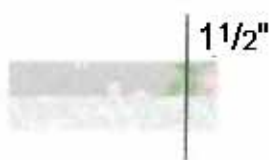
D segment



4. Repeat step 3 with 1½" gray sprig and gray filigree strips to make 2 strip sets and crosscut (48) 1½" E segments.

Diagram 6

E segment



5. Sew a D segment to an E segment to make a DE unit. Press seam to 1 side. Repeat to make (48) DE units total.



Diagram 7 DE Unit  
Make 48

6. Join 2 each C units and DE units to make a sashing square. Press all seams to 1 side. Repeat to make (15) sashing squares total.



Diagram 8  
Make 17

Sashing  
Square

7. Sew a black sprig triangle to 2 sides of each 1½" gray sprig square. Press seams toward the triangles.

Diagram 9

Make 28



8. Sew a pieced triangle to 2 sides of each remaining DE unit to complete 17 sashing triangles. Press seams toward the pieced triangles.

Diagram 10

Make 14



Sashing  
Triangle

## Quilt Assembly:

Refer to the exploded quilt center diagram for steps 1–7. Note orientation of all units before sewing. Press all seams toward the sashing strips and the sashing rows.



1. Sew a sashing triangle to each end of 2 A sashing strips to make rows 1 and 13.
2. Join 2 A sashing strips, a 9½” black floral square, and 2 gray setting triangles to make row 2. Repeat to make row 12.
3. Join 2 A sashing strips, 1 B sashing strip, 2 sashing squares, and 2 sashing triangles to make row 3. Repeat to make row 11.
4. Join 2 A sashing strips, 2 B sashing strips, 2 black floral squares, 1 gray floral square, and 2 gray setting triangles to make row 4. Repeat to make row 10.
5. Join 2 A sashing strips, 3 B sashing strips, 4 sashing squares, and 2 sashing triangles to make row 5. Repeat to make row 9.

6. Join 2 A sashing strips, 4 B sashing strips, 3 black floral squares, and 2 gray floral squares and 1 gray setting triangle to make row 6. Repeat to make row 8.
7. Join 2 A sashing strips, 4 B sashing strips, 5 sashing squares, and 2 sashing triangles to make row 7.
8. Sew the rows together in numerical order. Add a gray corner triangle to the 4 angled edges to complete the 55¾” x 74” quilt center. Press seams toward the triangles.
9. Sew the 74” black/gray stripe strips to the long sides and the 59¾” black/gray stripe strips to the top and bottom. Press seams toward the strips.
10. Join the 5½” x 42” black floral strips on the short ends to make a long strip. Press seams to 1 side. Cut into (2) 78” strips and (2) 69¾” strips. Sew the longer strips to the long sides and the shorter strips to the top and bottom. Press seams toward the strips.
11. Remove the selvage edges from the backing pieces. Join the pieces on the long edges with a ½” seam allowance. Press seam open. Trim the side edges to make a 78” x 96” backing piece.
12. Layer, quilt and bind, using your favorite methods and the black print binding strips, to complete the quilt.

*While all possible care has been taken to ensure the accuracy of this pattern, we are not responsible for printing errors or the way in which individual work varies.*