

Heirloom Garden

by *Marie Osmond*



Finished size: 49 5/8" x 63 3/4"



20376-A 1 1/8 yds
Border & Block



20374-E 1 1/2 yds
Background



20379-E 7/8 yd
Block Background



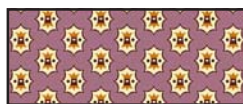
20379-H 3/4 yd
Block & Accent Border



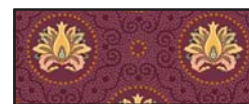
20373-ME 4 3/4 yds
Block, Backing & Binding



20378-S 1/2 yd
Block



20378-V 3/8 yd
Block



20377-V 1/2 yd
Block

Designed by Retta Warehime
 Skill Level: Advanced Beginner
 Finished Block size: 8"

Cutting

20376-A (Border & Block)

3 - 2 1/2" squares
 6 - 2 7/8" squares
 6 - 1 1/2" x 6 1/2" pieces
 6 - 1 1/2" x 8 1/2" pieces
 2 - 4 1/2" x 56 1/4" border (sides)
 2 - 4 1/2" x 50 1/8" border (top & bottom)

20379-H (Block)

4 - 2 1/2" squares
 8 - 2 7/8" squares
 8 - 1 1/2" x 6 1/2" pieces
 8 - 1 1/2" x 8 1/2" pieces
 2 - 1 1/2" x 54 1/4" accent border (sides)
 2 - 1 1/2" x 42 1/8" accent border (top & bottom)

20374-E (Background)

14 - 2 1/2" x 8 1/2" pieces
 2 - 2 1/2" x 28 1/2" strips
 1 - 2 1/2" x 38 1/2" strip
 3 - 16" squares cut twice diagonally corner to corner (setting triangles)
 2 - 7" squares cut once diagonally (corner triangles)

20373-ME (Block, Backing & Binding)

3 - 2 1/2" squares
 6 - 2 7/8" squares
 6 - 1 1/2" x 6 1/2" pieces
 6 - 1 1/2" x 8 1/2" pieces
 7 - 2 1/2" x 45" strips (binding)

20378-S (Block)

3 - 2 1/2" squares
 6 - 2 7/8" squares
 6 - 1 1/2" x 6 1/2" pieces
 6 - 1 1/2" x 8 1/2" pieces

20378-V (Block)

2 - 2 1/2" squares
 4 - 2 7/8" squares
 4 - 1 1/2" x 6 1/2" pieces
 4 - 1 1/2" x 8 1/2" pieces

20377-V (Block)

3 - 2 1/2" squares
 6 - 2 7/8" squares
 6 - 1 1/2" x 6 1/2" pieces
 6 - 1 1/2" x 8 1/2" pieces

20379-E (Block Background)

72 - 2 1/2" squares
 36 - 2 7/8" squares. Draw a diagonal line corner to corner on wrong side.

Sewing

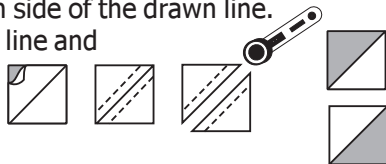
Use color illustration as block placement guide.

Seam allowances are standard 1/4".

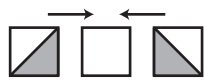
Arrows indicate pressing direction.

1. RST, pair up 2 7/8" background squares with 2 7/8" color squares. Sew 1/4" each side of the drawn line.

Cut apart on the drawn line and press to color to make half-square triangles.



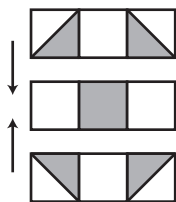
2. Sew one half-square triangle of same color to each side of one 2 1/2" background square.



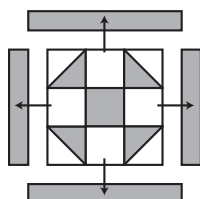
3. Sew one 2 1/2" background square to each side of 2 1/2" color square.



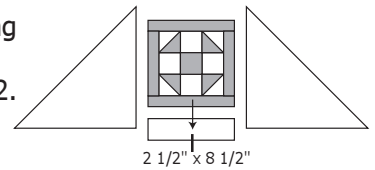
4. Using same color combinations, assemble 18 blocks.



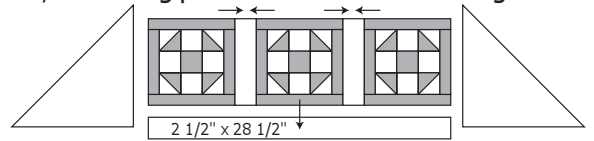
5. Using same color combinations, sew 1 1/2" x 6 1/2" piece to each side of block, then 1 1/2" x 8 1/2" pieces to the top and bottom.



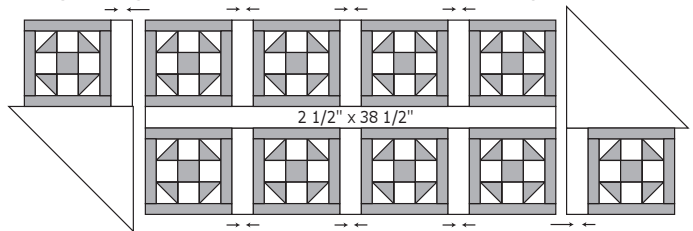
6. Sew 2 1/2" x 8 1/2" sashing piece to block, then setting triangles to each side. Make 2.



7. Sew 2 1/2" x 8 1/2" sashing pieces to join three blocks, then sew 28 1/2" sashing piece to bottom. Add setting triangles. Make 2.

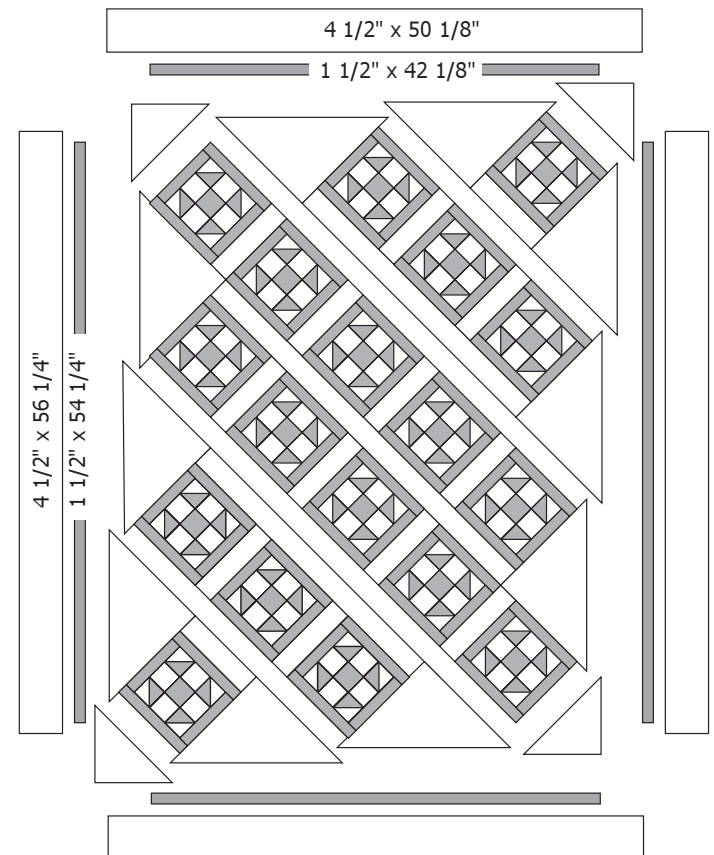


8. Sew 2 1/2" x 8 1/2" sashing pieces to join four blocks. Make 2. Join rows with 38 1/2" sashing piece.
 9. Sew 2 1/2" x 8 1/2" sashing piece to two blocks then add setting triangles. Sew these to the ends of the joined rows.



10. Assemble rows, then add corner triangles.

11. Measuring 1/4" from points, trim outside edges.



12. Sew accent borders to quilt top, sides first then top and bottom. Add outside borders in the same manner.

13. Layer, quilt, and bind. Add butterfly to left hand corner of quilt.

While all possible care has been taken to ensure the accuracy of this pattern, we are not responsible for printing errors or the way in which individual work varies.