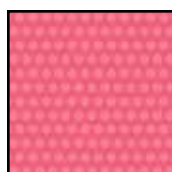




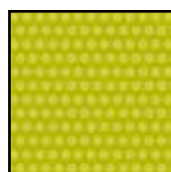
Finished Size: 63½" x 80¾"



21986 P



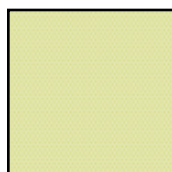
21983 HP



21986 H



21984 H



21987 H



21983 P



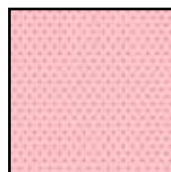
21987 Z



21982 HP



21985 PH



21987 P



21983 PV

FABRIC REQUIREMENTS

Design	Yards
21986 P	2⅞
21983 HP	⅜
21986 H	1⅛
21984 H	¼
21987 H	⅜
21983 P	¼
21987 Z	⅞
21982 HP	¾
21985 PH	1
21987 P	⅜
21983 PV (backing)	5

In the Meadow

Flower Appliqué' Block - 12" x 12" finish size.

Row Blocks - 9" x 6" finish size.

Skill Level: Intermediate to Advanced

All seams are sewn with a ¼" seam allowance.

All appliqué templates and cut pieces include ¼" seam allowance. If using the fusible appliqué method remove the ¼" seam allowance on the templates and on the cut pieces.

Cutting:

21987P - Pink Dot

- Cut (14) Petal Templates FLOWER APPLIQUE.

21987H - Green Dot

- Cut (14) Petal Templates FLOWER APPLIQUE.

21986P - DK Pink Flower

- Cut (5) 15½" x WOF, Sub cut (9) 15½" x 19¾".
- Cut (2) 3½" x WOF, Sub cut (14) 3½" x 3½".
- Cut (2) 6½" x WOF, Sub cut (7) 6½" x 9½".

21985PH - Stripe

- Cut (2) 3" x WOF, join the strip using diagonal seams. Press seam to one side. Sub cut (1) 3" x 63½".
- Cut (8) 2½" x WOF, join the strip using diagonal seams. Press seams open. Fold strip in half lengthwise, with wrong sides together for the BINDING.
- Cut (6) Petal Template FLOWER APPLIQUE.

21986H - Green Flower

- Cut (2) 6½" x WOF, join the strip using diagonal seams. Press seam to one side. Sub cut (1) 6½" x 63½".
- Cut (2) 3" x WOF, join the strip using diagonal seams. Press seam to one side. Sub cut (1) 3" x 63½".
- Cut (2) 3½" x WOF, Sub cut (14) 3½" x 3½".
- Cut (4) 2" x WOF FLOWER APPLIQUE STEMS.

21982HP - Lg Stripe

- Cut (2) 4½" x WOF, join the strip using diagonal seams. Press seam to one side. Sub cut (1) 4½" x 3½".
- Cut (2) 6½" x WOF, Sub cut (7) 6½" x 9½".

21983HP - Green Pink Flower

- Cut (2) 3½" x WOF, join the strip using diagonal seams. Press seam to one side. Sub cut (1) 3½" x 63½".

21983PV - Lg Pink Flower

- Cut (2) 2½ yard pieces, with right sides together sew one long selvedge edge with a 1" seam allowance. Trim the seam allowance to ½" wide and press open. Trim piece to measure 73" wide x 90" BACKING.
- Cut (8) Petal Templates (FLOWER APPLIQUE) from remainder of backing fabric.

21987Z - White Dot

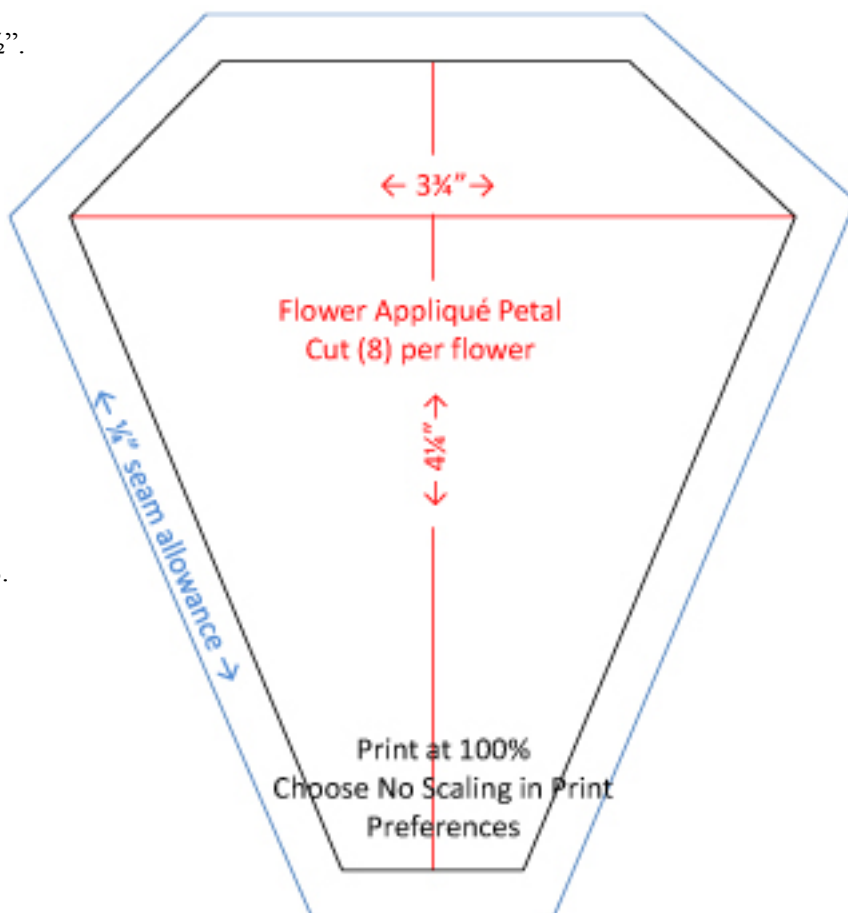
- Cut (6) 3 1/8" x WOF, join the strip using diagonal seams. Press seam to one side. Sub cut (6) 3 1/8" x 15½" (2) 3 1/8" x 63½".
- Cut (6) 4" Circles FLOWER APPLIQUE CENTERS.

21984H - Green Plaid

- Cut (6) Petal Templates FLOWER APPLIQUE.

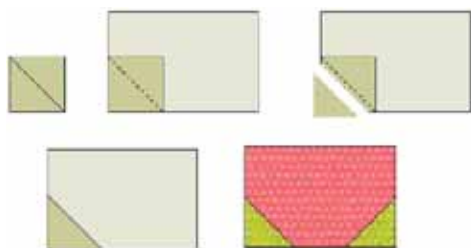
21983P - Pink Flower

- Cut (8) Petal Template FLOWER APPLIQUE.



Row Blocks:

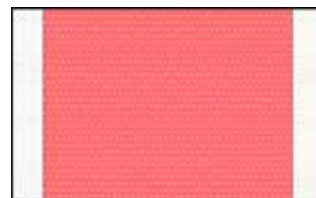
1. Draw a line from corner to corner on the wrong side of the Green Flower $3\frac{1}{2}'' \times 3\frac{1}{2}''$ squares.
2. Pair the Green Flower squares with the Dk Pink Flower $6\frac{1}{2}'' \times 9\frac{1}{2}''$ rectangles. Place a Green Flower $3\frac{1}{2}'' \times 3\frac{1}{2}''$ square on the bottom left corner of the Dk Pink Flower $6\frac{1}{2}'' \times 9\frac{1}{2}''$ rectangle. Sew on the drawn line. Trim excess fabric away from the sewn line, leave a $\frac{1}{4}''$ seam allowance. Press towards the Green Flower. Repeat on opposite corner. Make (7) Green/Pink Row Blocks total.



3. Sew (7) Green/Pink Row Blocks together to make a row. Make (1) Green/Pink Row.
4. Draw a line from corner to corner on the wrong side of the Dk Pink Flower $3\frac{1}{2}'' \times 3\frac{1}{2}''$ squares. See step 2 above.
5. Follow the step 2 above, but pair the Dk Pink Flower squares with the LG Stripe $6\frac{1}{2}'' \times 9\frac{1}{2}''$ rectangles. Place a Dk Pink Flower $3\frac{1}{2}'' \times 3\frac{1}{2}''$ square on the bottom left corner of the Lg Stripe $6\frac{1}{2}'' \times 9\frac{1}{2}''$ rectangle. Sew on the drawn line. Trim excess fabric away from the sewn line, leave a $\frac{1}{4}''$ seam allowance. Press towards the Pink Plaid. Repeat on opposite corner. Make (7) Blocks total. Make (7) Pink/Flower Row Blocks.
6. Sew the (7) Pink/Flower Row Blocks together to make a row. Make (1) Pink/Flower Row



7. Sew a White Dot $3\frac{1}{8}'' \times 15\frac{1}{2}''$ to the left and right side of a DK Pink Flower $15\frac{1}{2}'' \times 19\frac{3}{4}''$. Press towards the DK Pink Flower. Make (3) Unit 1.



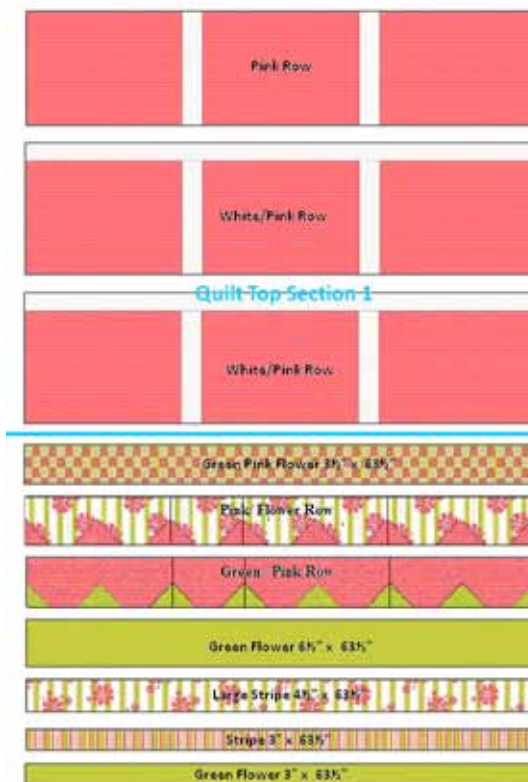
8. Sew a DK Pink Flower $15\frac{1}{2}'' \times 19\frac{3}{4}''$ to the left and right side of Unit 1. Press towards the DK Pink Flower. Make (3) Pink Rows.



9. Sew a White Dot $3\frac{1}{8}'' \times 63\frac{1}{2}''$ to the top of a Pink Row. Press towards the White Dot. Make (2) White/Pink Rows



10. Assemble Rows per diagram below. You will have 2 Sections, Quilt Top Section 1 and Quilt Top Section 2.



Appliqué Flowers:

Green Flowers - (6) 2" wide stems
 White Dots - (6) 4" Circles Center
 Green Dot - (14) Petal Templates
 Stripe - (6) Petal Templates
 Pink Flower - (8) Petal Templates
 Green Plaid - (6) Petal Templates
 Pink Dot - (14) Petal Templates

- All appliqué templates and cut pieces include 1/4" seam allowance.
- Use the quilt image for placement.
- Appliqué are sewn to the Quilt Top Section 1.
- Trim stems to a height of your choice. The bottom edge of the stems will line up with the bottom edge of the Quilt Top Section 1. Attach the stems, then flower petals and finally the flower centers.
- (8) Petals make a flower
- All appliqué should be top stitched in place; straight stitch, blanket stitch and satin stitch are just a few of the stitches that you can use.

Fusible Appliqué - remove the 1/4" seam allowance on the templates. Apply the fusible web to the 2" wide stem strips then trim them down to 1 1/2" wide. Apply fusible web to the wrong side of the fabric for the flower appliqués following product directions. Cut out the flower petals. Fuse stems to the Quilt Top Section 1. Layout the flower petals to form a circle, fuse in place. Fuse the flower center.

Needle Turn and Machine Appliqué - Press 1/4" seam towards the wrong side on both long edges of the Green Flowers 2" x WOF. Cut to length and attach the Stems to Quilt Top Section 1.

Press 1/4" seam towards the wrong side on the top 3 petal edges.



1. Layout the flower petals to form a circle; with right sides together sew (2) flower petals together with a 1/4" seam allowance. Stop sewing 1/4" from the top edge. Press towards one side. Make sure not to catch the pressed top edge in the seam. Continue sewing petal pairs. Make (4) PAIRS
2. Sew (2) pairs together to make a half. Make (2) HALFS
3. Sew the HALFS together to make a flower. Repress the outside top edges if needed.



Make 3 Make 1 Make 1 Make 1

4. Attach the Flowers to the Quilt Top Section 1 using your appliqué technique of choice.
5. Prepare and attach the flower centers using your appliqué technique of choice
6. Sew Quilt Top Section 1 to Quilt Top Section 2.

Layer, Machine Quilt and Bind using your favorite method.

While all possible care has been taken to ensure the accuracy of this pattern, we are not responsible for printing errors or the way in which individual work varies.