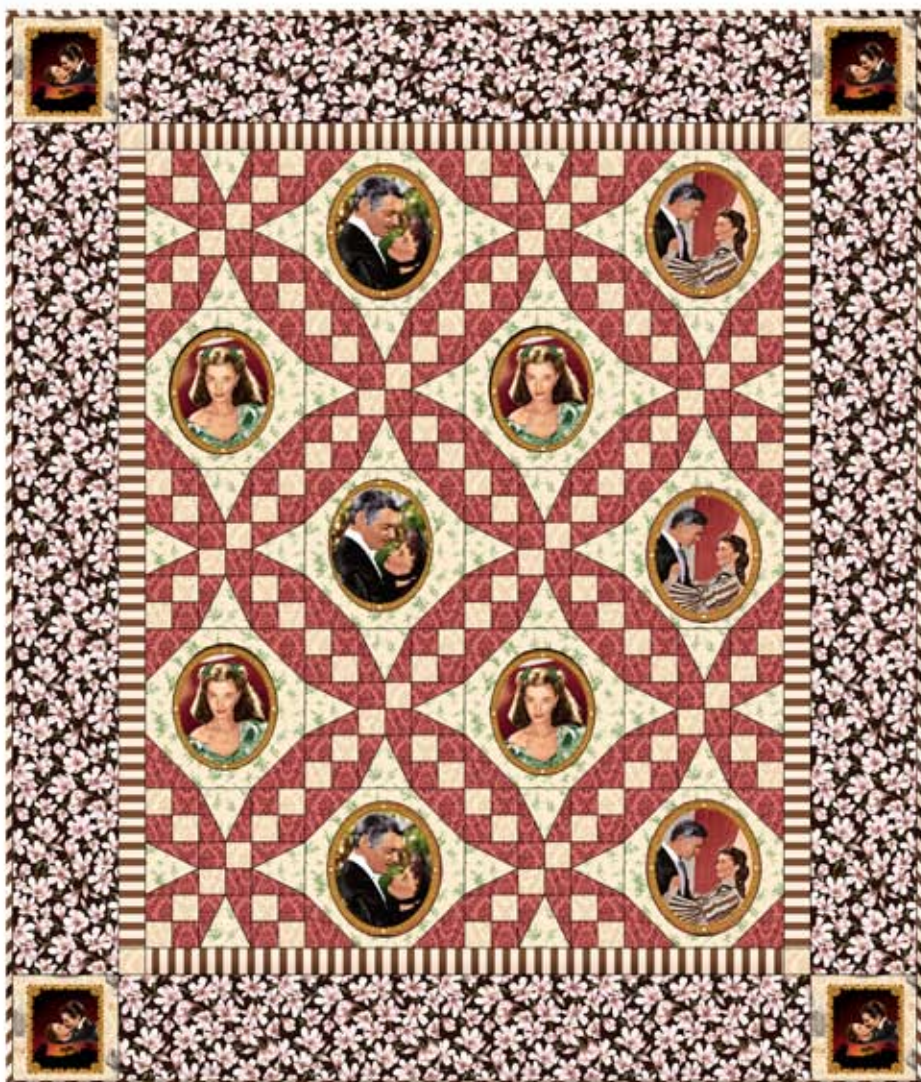


Scarlet and Rhett



Quilt Size 68" x 80"



20881A – Oval Picture Frames
4 Repeats



20885EG - Green Tonal
2 yards



20884C – Red Tonal
1 1/4 yards



20983A – Brown Floral
1-1/2 yards



20882AE – Brown/Ivory Stripe
1-1/2 yards



20880AG – Picture Frame
1/3 yard

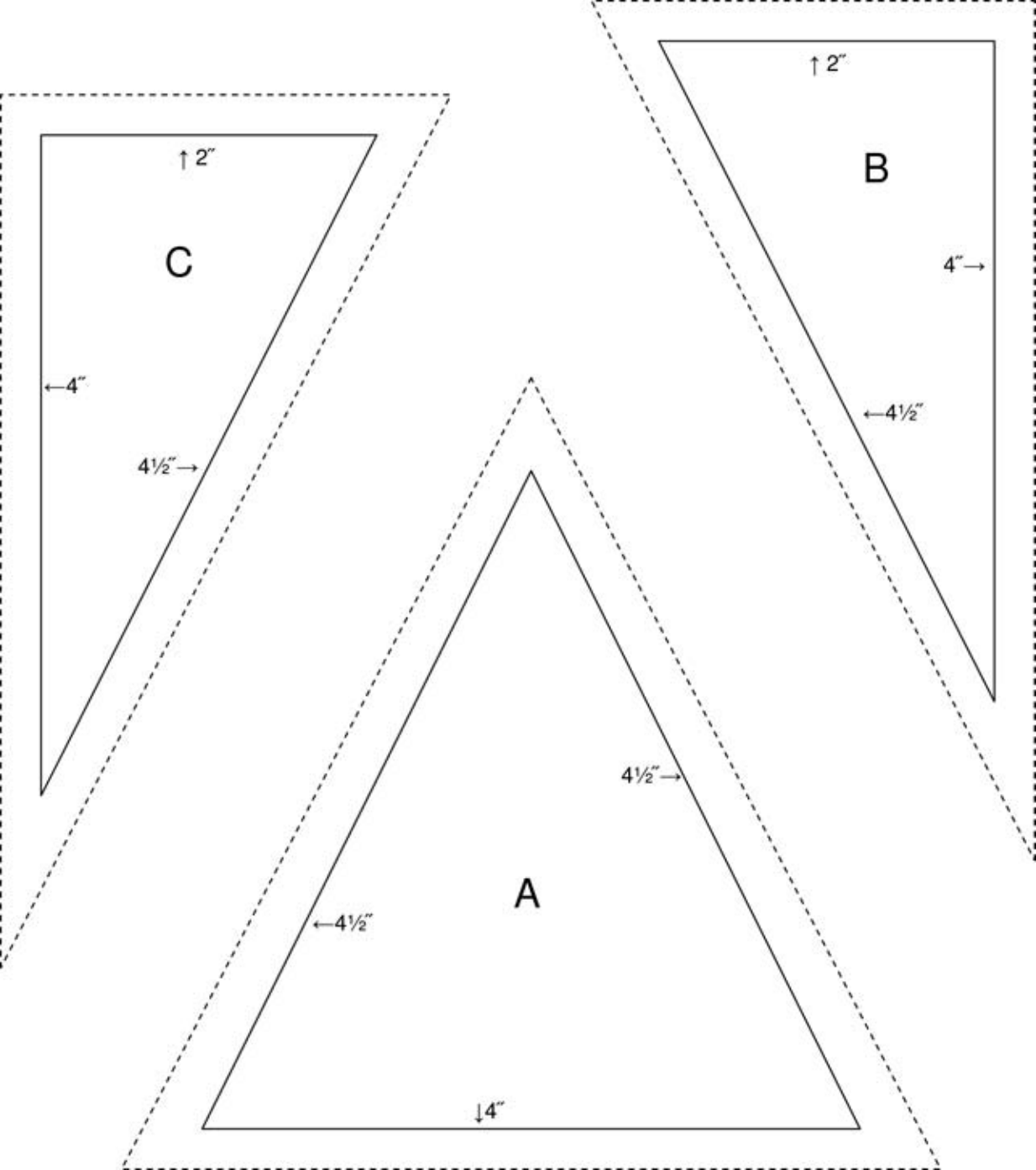


20884E – Ivory Tonal
2/3 yard



20880-AG – Green Scarlet
5 yards

While all possibility has been taken to ensure the accuracy of this pattern, we are not responsible for printing errors or the way in which Individual works varies.



Advanced Beginner

Quilt Designed by Vicki Niro

Finished Block Size 12" x 12"

20881A – Oval Picture Frames

Fussy Cut(10) Oval Images for Appliqué

20885EG - Green Tonal

Cut (3) 4½" x WOF, Subcut (40) Triangles per templates A

Cut (4) 12½" x WOF, Subcut (10) 12½" x 12½"

20884C – Red Tonal

Cut (7) 2½" x WOF

Cut (3) 5½" x WOF, Subcut (40) Triangles per template C and (40) per template B

Cut (5) 4½" x WOF, Subcut (40) 4½" x 4½"

20983A – Brown Floral

Cut (6) 8½" x WOF Stitch Short ends together

Cut (2) 8½" x 52½" and (2) 8½" x 64½"

20882AE – Brown/Ivory Stripe

Cut (6) 2½" x WOF Stitch short ends together

Subcut (2) 2½" x 48½" and (2) 2½" x 60½"

Make 316" of 2½" wide Bias Cut Binding using your favorite method

20880AG – Picture Frame

Fussy Cut (4) 8½" x 8½" Squares, center picture frame images

20884E – Ivory Tonal

Cut (1) 2½" x WOF, Subcut (4) 2½" x 2½"

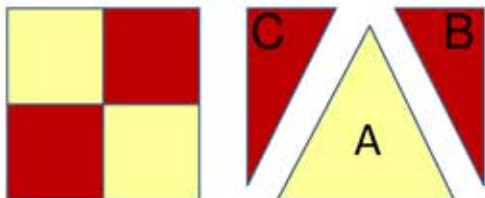
Cut (7) 2½" x WOF

20880-AG – Green Scarlet

Cut (2) 2½ yard, Sew one long salvage edge , right sides together with a 1" seam. Trim seam to ½", press open. **BACKING**

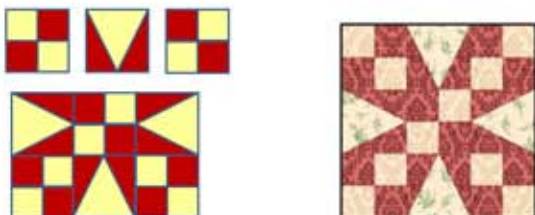
Block Assembly:

Sew Red 2½" x WOF strips to the Ivory 2½" x WOF strips. Press towards the Red. Subcut (100) 2½" x 4½" segments. Sew (2) segments together to make (50) Four Patches.



Sew the Red triangles to each side of the Green triangles. Press towards the Red.

Sew (5) Four Patches and (4) Triangle Blocks together to make a Garden Patch Block. Make (10).



Draw a diagonal line corner to corner on the Red 4½" x 4½" squares. Place a square on each corner of the Green 12½" x 12½" squares. Stitch on the drawn line. Press inside triangle open and trim away underneath excess fabric. Snowball Block. Make ((10)



↑ Trim away

Using your favorite appliqué method, appliqué the oval frames to the center of each Snowball block.

Quilt Center::

Following the Quilt Image sew (4) blocks together to make a Row. Make (5) Rows. Press Rows 1, 3, and 5 to the right. Press Rows 2 and 4 to the left.

Borders:

Sew an Ivory 2½" x 2½" square to each end of a Brown/Ivory Stripe 2½" x 48½". Press towards the Ivory. Inner Border 1

Sew a Brown/Ivory Stripe 2½" x 60½" to each side of the Quilt Center.

Sew the Inner Border 1 to the top and bottom of the Quilt Center. Press towards the Stripe.

Sew The Fussy Cut, Picture Frame 8½" x 8½" square to each side of the Brown Floral 2½" x 48½". Press towards the Picture Frame. Outer Border 2.

Sew the Brown Floral 8½" x 64½" to each side of the Quilt Center. Press towards the Brown.

Sew the Outer Border 2 to the top and bottom of the Quilt Center. Press towards the Brown.

Layer, Machine Quilt and Bind using your favorite method.

